



Automated process control and incubation efficiency

Vios iDx AD 255 CO₂ Incubators

Innovative features

- Automated operation of incubator door
- Simplified door design setup, well suited for robotic interface
- Automatic stop if an obstruction is encountered
- Patented Thermo Scientific™ THRIVE™ active airflow technology for homogeneous growth conditions
- In-chamber HEPA filtration to achieve ISO Class 5 clean room-like air quality conditions in five minutes after a 30-second door opening

Benefits include

- Complete recovery in 10 minutes or less
- Proven contamination control
- Integration-ready for automated production settings that leverage a modular design to scale
- Easy to clean and maintain with Thermo Scientific™ Steri-Run™ 12-log sterilization cycle

Factory-installed options for application and operational flexibility

- CO₂ control
- 1-21% O₂ control range
- Remote control and foot pedal configurations for assisted door opening
- Rear water supply access available for external water fill and drain
- Left swing door configuration
- Brushed stainless steel exterior

Thermo Scientific™ Vios™ iDx AD 255 CO₂ Incubators are designed for integration into automated laboratories that leverage a modular design to scale. The Vios family of incubators is known for optimal cell growth conditions and minimal contamination risk. With the added innovation of a patent-pending automated door control, these leading incubators now bring their excellent recovery and uniformity to emerging automated cell therapy production processes 24/7, 365.

Many industry experts agree that human handling and complex processes limit broader application of cutting-edge cell therapies to treat cancer, autoimmunity, and orphan diseases. As automation is incorporated across the sector, these treatments will be produced in a more economical and safer fashion. Several companies are developing advanced robotics to meet these goals and Vios iDx AD 255 CO₂ Incubators are a natural fit. Various therapies are researched and developed in Vios iDx incubators due to their excellent culturing conditions that help ensure important cellular critical quality attributes.

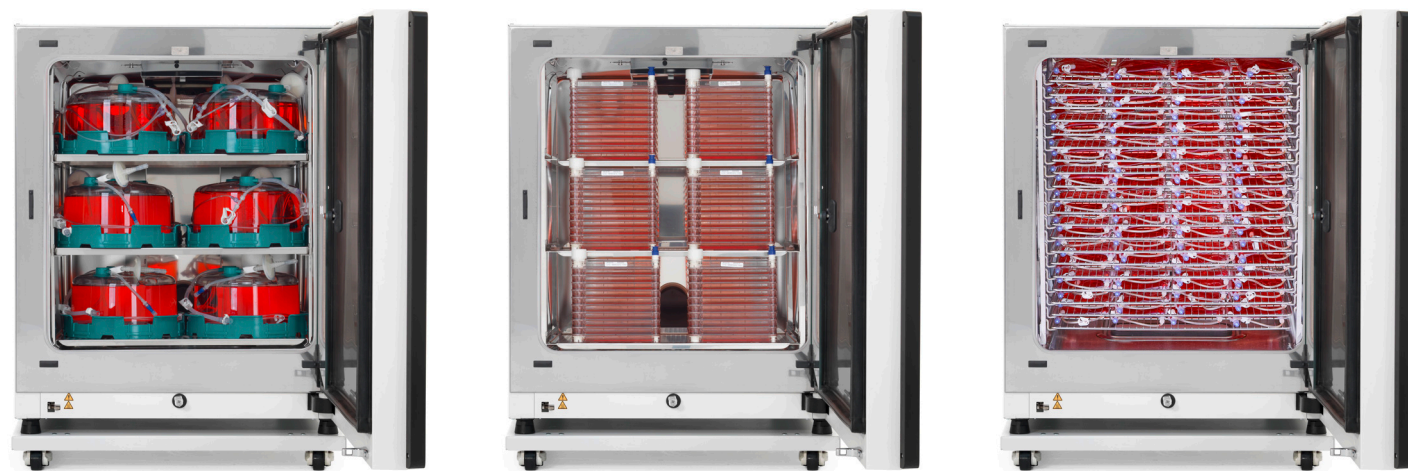
Vios iDx CO₂ Incubators feature contamination control technologies that are proven effective. In-chamber HEPA filtration captures all particles regardless of size, protecting cultures from airborne contaminants that can enter any incubator when the door is opened. The water reservoir is fully covered and protected and is easy to drain and refill to keep the water fresh and avoid the need for chemicals that could stress the cultured cells. The Thermo Scientific™ Steri-Run™ Cycle is independently proven to reach a 12-log sterility assurance level, eliminating more than one million biological indicators for both dry heat sterilization and autoclave sterilization in half the lethal time used in production models.

Ordering information for Vios iDx AD 255 CO₂ Incubators

Unit	Description	Voltage	SKU
Remote operation	IR180Si sensor, electropolished stainless steel chamber, 4-20 mA data output	120 V 50/60 Hz	51036288
		230 V 50/60 Hz	51036289
		100 V 50/60 Hz	51036287
Foot pedal operation	IR180Si sensor, electropolished stainless steel chamber, 4-20 mA output, foot pedal operation	120 V 50/60 Hz	51036285
		230 V 50/60 Hz	51036286
		100 V 50/60 Hz	51036284

Accessories for Vios iDx AD 255 CO₂ Incubators

Description	Cat. No.
Stands and stacking adaptors	
Support frame for single chamber, 780 mm high (without castors)	50171747
Low profile support frame for double chamber, 85 mm high (with castors)	50171157
Adaptor required for stacking 255 models	50171746
Monitoring and data collection	
Gateway Accessory Kit for OPC UA™ enablement of Vios iDx CO ₂ Incubators	50168119
Gateway Accessory Kit for OPC UA enablement of Vios iDx CO ₂ Incubators – China Only	50168031
Shelving	
Reinforced shelf, stainless steel	50150643
Reinforced clip bar shelf, stainless steel	50160234
Thermo Scientific™ CultiMaxx™ shelving system to support up to 10 G-Rex 500M-CS bioreactor	50164781
CultiMaxx shelving system to support up to 10 Thermo Scientific™ Nunc™ Cell Factory™ systems with 4 layers	50166268
CultiMaxx shelving system to support up to 6 Nunc Cell Factory systems with 10 or 13 layers	50166285
CultiMaxx shelving system to support cell culture bags	50166275



Additional shelving options available for the Vios iDx AD 255 CO₂ incubator include CultiMaxx Shelving Systems pictured above. L-R: CultiMaxx shelving system for G-Rex Bioreactors, Cat. No. 50164781, CultiMaxx shelving system for Nunc Cell Factory systems, Cat. No. 50166285, CultiMaxx shelving system for cell culture bags, Cat. No. 50166275.

Learn more at thermofisher.com/co2ad

thermo scientific

For laboratory use. It is the customer's responsibility to ensure that the performance of the product is suitable for the customer's specific uses or applications. © 2024-2025 Thermo Fisher Scientific Inc. All rights reserved. G-Rex is a trademark of Wilson Wolf Corporation. OPC UA is a trademark of OPC Foundation. All other trademarks are the property of Thermo Fisher Scientific or its subsidiaries.