

MFF POLYCLONAL ANTIBODY

Catalog Number: 17090-1-AP

Featured Product

20 Publications

Basic Information

Catalog Number:
17090-1-AP

Size:
45 µg/150 µl

Source:
Rabbit

Isotype:
IgG

Purification Method:
Antigen affinity purification

Immunogen Catalog Number:
AG9990

GenBank Accession Number:
BC000797

GeneID (NCBI):
56947

Full Name:
mitochondrial fission factor

Calculated MW:
38 kDa

Observed MW:
26-29, 35-38 kDa

Recommended Dilutions:

WB 1:500-1:5000

IP 1:500-1:5000

IHC 1:20-1:200

IF 1:20-1:200

Applications

Tested Applications:
ELISA, WB, IHC, IP, IF

Cited Applications:
IF, IP, WB

Species Specificity:
Human, Mouse, Rat

Cited Species:
human, monkey, mouse

Positive Controls:

WB : human brain tissue, HeLa cells, mouse brain tissue, rat brain tissue

IP : mouse brain tissue;

IHC : human brain tissue; human heart tissue, human stomach tissue

IF : HepG2 cells; HeLa cells

Background Information

MFF (mitochondrial fission factor) is a mitochondrial outer membrane protein that is involved in mitochondrial localization of Drp1 and mitochondrial fission. Multiple isoforms of MFF exist due to the alternative splicing. This antibody recognizes the endogenous MFF protein around 26-29 kDa and 35-38 kDa.

Notable Publications

Author	Pubmed ID	Journal	Application
Reiko Ban-Ishihara	26358295	FEBS Lett	WB, IF
Y Ruan	24176854	Cell Death Dis	WB
Takaya Ishihara	25348719	Mol Cell Biol	WB

Storage

Storage:

Store at -20°C. Stable for one year after shipment.

Storage Buffer:

PBS with 0.02% sodium azide and 50% glycerol pH 7.3.

Aliquoting is unnecessary for -20°C storage

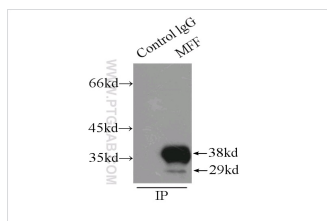
For technical support and original validation data for this product please contact:

T: 1 (888) 4PTGLAB (1-888-478-4522) (toll free in USA), or 1(312) 455-8498 (outside USA)

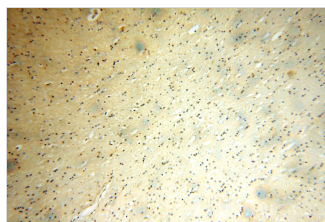
E: proteintech@ptglab.com
W: ptglab.com

This product is exclusively available under Proteintech Group brand and is not available to purchase from any other manufacturer.

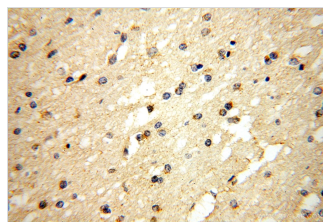
Selected Validation Data



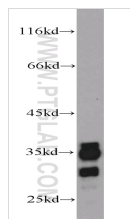
IP Result of anti-MFF (IP: 17090-1-AP, 3 μ g; Detection: 17090-1-AP 1:1000) with mouse brain tissue lysate 8000 μ g.



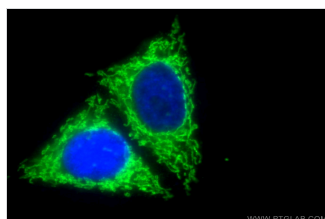
Immunohistochemical of paraffin-embedded human brain using 17090-1-AP(MFF antibody) at dilution of 1:100 (under 10x lens)



Immunohistochemical of paraffin-embedded human brain using 17090-1-AP(MFF antibody) at dilution of 1:100 (under 40x lens)



human brain tissue were subjected to SDS PAGE followed by western blot with 17090-1-AP(MFF antibody) at dilution of 1:1000



Immunofluorescent analysis of (10% Formaldehyde) fixed HepG2 cells using 17090-1-AP(MFF Antibody) at dilution of 1:100 and Alexa Fluor 488-conjugated AffiniPure Goat Anti-Rabbit IgG(H+L)