

MME,CD10 Polyclonal Antibody

Catalog number: 10302-1-AP

Size: 22 µg/150 µl

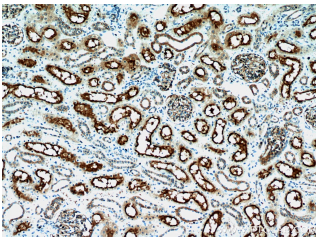
Source: Rabbit

Isotype: IgG

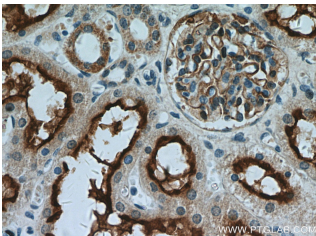
Synonyms:

MME; Atriopeptidase, CALLA, CD10, DKFZp686O16152,

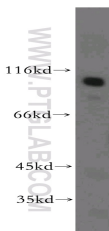
Enkephalinase, EPN, membrane metallo endopeptidase, MME, NEP, Nephrylsin, Neutral endopeptidase, Neutral endopeptidase 24.11



Immunohistochemical of paraffin-embedded human kidney using 10302-1-AP(MME,CD10 antibody) at dilution of 1:50 (under 10x lens)



Immunohistochemical of paraffin-embedded human kidney using 10302-1-AP(MME,CD10 antibody) at dilution of 1:50 (under 40x lens)



mouse kidney tissue were subjected to SDS PAGE followed by western blot with 10302-1-AP(MME,CD10 antibody) at dilution of 1:500

Background

MME is also names as neprilysin,CALLA,NEP,SFE,CD10 and belongs to the peptidase M13 family.It is a glycoprotein that is particularly abundant in kidney, where it is present on the brush border of proximal tubules and on glomerular epithelium.CD10 has been considered a useful marker in the diagnosis of renal carcinomas, because of its expression in clear cell and papillary renal cell carcinomas and its absence in chromophobe renal cell carcinomas(PMID:15286660).

Applications

Tested applications:	ELISA, WB, IHC, FC
Species specificity:	Human,Mouse,Rat; other species not tested.
Calculated MME,CD10 MW:	750aa,86 kDa
Observed MME,CD10 MW:	90-100kd
Positive WB detected in	Mouse kidney tissue, HEK-293 cells
Positive IHC detected in	Human kidney tissue, human hepatocirrhosis tissue, human liver cancer tissue, human renal cell carcinoma tissue
Positive FC detected in	Jurkat cells
Recommended dilution:	WB: 1:200-1:2000 IHC: 1:20-1:200 FC: N/A

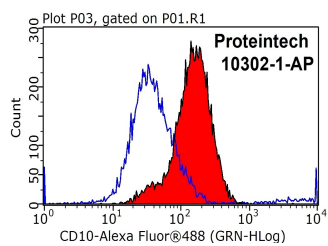
Application key: WB = Western blotting, IHC= Immunohistochemistry, IF = Immunofluorescence, IP = Immunoprecipitation

Immunogen information

Immunogen:	Ag0427
GenBank accession number:	BC101658
Gene ID (NCBI):	4311
Full name:	Membrane metallo-endopeptidase

Product information

Purification method:	Antigen affinity purification
Storage:	PBS with 0.02% sodium azide and 50% glycerol pH 7.3. Store at -20°C.



1X10⁶ Jurkat cells were stained with 0.2ug MME,CD10 antibody (10302-1-AP, red) and control antibody (blue). Fixed with 90% MeOH blocked with 3% BSA (30 min). Alexa Fluor 488-conjugated AffiniPure Goat Anti-Rabbit IgG(H+L) with dilution 1:1000.