

ENOPH1 Polyclonal Antibody

Catalog number: 11763-1-AP

Size: 45 µg/150 µl

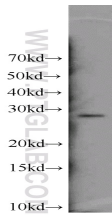
Source: Rabbit

Isotype: IgG

Synonyms:

ENOPH1; DKFZp586M0524; E1;

FLJ12594; MASA; MST145



HL-60 cells were subjected to SDS PAGE followed by western blot with 11763-1-AP(ENOPH1 Antibody) at dilution of 1:400

Applications

Tested applications:	ELISA, WB
Species specificity:	Human, mouse, rat; other species not tested.
Positive WB detected in:	HL-60 cells
Calculated ENOPH1 MW:	13kd / 29kd
Observed ENOPH1 MW:	30kd
Recommended dilution:	WB: 1:200-1:1000

Application key: WB = Western blotting, IHC = Immunohistochemistry, IF = Immunofluorescence, IP =

Immunoprecipitation, FC = Flow cytometry

Immunogen information

Immunogen:	Ag2360
GenBank accession number:	BC001317
Gene ID (NCBI):	58478
Full name:	Enolase-phosphatase 1

Product information

Purification method:	Antigen affinity purification
Storage:	PBS with 0.1% sodium azide and 50% glycerol pH 7.3. Store at -20°C.