

## RAB3D Polyclonal Antibody

Catalog number: 12320-1-AP

Size: 73 µg/150 µl

Source: Rabbit

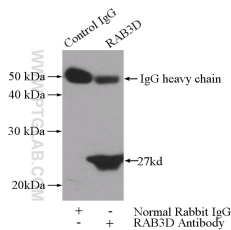
Isotype: IgG

Synonyms:

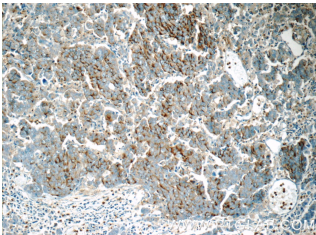
RAB3D; D2 2, GOV, RAB16,

RAB3D, RAD3D, Ras related

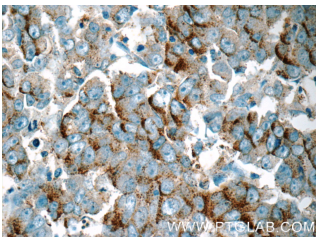
protein Rab 3D



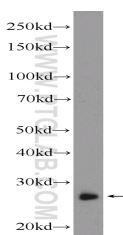
IP Result of anti-RAB3D (IP:12320-1-AP, 3µg; Detection:12320-1-AP 1:600) with SW 1990 cells lysate 2400ug.



Immunohistochemistry of paraffin-embedded human prostate cancer tissue slide using 12320-1-AP( RAB3D Antibody) at dilution of 1:50 (under 10x lens)



Immunohistochemistry of paraffin-embedded human prostate cancer tissue slide using 12320-1-AP( RAB3D Antibody) at dilution of 1:50 (under 40x lens)



mouse lung tissue were subjected to SDS PAGE

### Background

Rab3D is a member of the Rab3 subfamily, which comprises four isoforms (Rab3A, Rab3B, Rab3C, and Rab3D). Rab3 proteins typically associate with secretory vesicles, including synaptic vesicles, and have been implicated in the control of regulated exocytosis. Rab3D is widely expressed in adipocytes, exocrine glands and several haematopoietic cells, where it localizes to secretory granules and vesicles.

### Applications

<b>Tested applications:</b>	ELISA, IHC, IP, WB
<b>Cited applications:</b>	IF, IHC, WB
<b>Species specificity:</b>	Human, Mouse, Rat; other species not tested.
<b>Cited species:</b>	Human, mouse, pig
<b>Calculated RAB3D MW:</b>	219aa, 24 kDa
<b>Observed RAB3D MW:</b>	28 kDa
<b>Positive WB detected in</b>	Mouse lung tissue, A549 cells, human cerebellum tissue, human stomach tissue, mouse spleen tissue, mouse stomach tissue, SW 1990 cells
<b>Positive IP detected in</b>	SW 1990 cells
<b>Positive IHC detected in</b>	Human prostate cancer tissue, human breast cancer tissue
<b>Recommended dilution:</b>	WB: 1:500-1:5000 IP: 1:200-1:2000 IHC: 1:20-1:200

Application key: WB = Western blotting, IHC = Immunohistochemistry, IF = Immunofluorescence, IP = Immunoprecipitation

### Immunogen information

<b>Immunogen:</b>	Ag2973
<b>GenBank accession number:</b>	BC016471
<b>Gene ID (NCBI):</b>	9545
<b>Full name:</b>	RAB3D, member RAS oncogene family

### Product information

<b>Purification method:</b>	Antigen affinity purification
<b>Storage:</b>	PBS with 0.1% sodium azide and 50% glycerol pH 7.3. Store at -20°C.

followed by western blot with  
12320-1-AP( RAB3D  
Antibody) at dilution of  
1:1200