

## MTX2 Polyclonal Antibody

Catalog number: 11610-1-AP

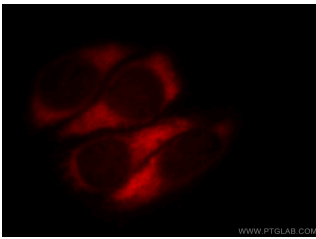
Size: 20 µg/150 µl

Source: Rabbit

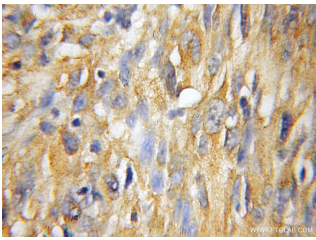
Isotype: IgG

Synonyms:

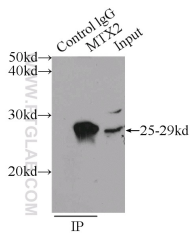
MTX2; metaxin 2, MTX2



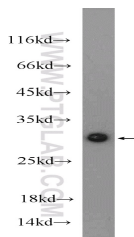
Immunofluorescent analysis of HepG2 cells, using MTX2 antibody 11610-1-AP at 1:25 dilution and Rhodamine-labeled goat anti-rabbit IgG (red).



Immunohistochemical of paraffin-embedded human gliomas using 11610-1-AP(MTX2 antibody) at dilution of 1:50 (under 10x lens)



IP Result of anti-MTX2 (IP:11610-1-AP, 3µg; Detection:11610-1-AP 1:300) with mouse heart tissue lysate 4000µg.



mouse heart tissue were subjected to SDS PAGE followed by western blot with 11610-1-AP( MTX2 Antibody)

### Applications

Tested applications:	ELISA, IHC, IF, IP, WB
Species specificity:	Human, Mouse, Rat; other species not tested.
Calculated MTX2 MW:	263aa, 30 kDa
Observed MTX2 MW:	25-29kd
Positive WB detected in	Mouse heart tissue, mouse kidney tissue, rat heart tissue
Positive IP detected in	Mouse heart tissue
Positive IHC detected in	Human gliomas tissue
Positive IF detected in	HepG2 cells
Recommended dilution:	WB: 1:200-1:2000 IP: 1:200-1:1000 IHC: 1:20-1:200 IF: 1:10-1:100

Application key: WB = Western blotting, IHC = Immunohistochemistry, IF = Immunofluorescence, IP = Immunoprecipitation

### Immunogen information

Immunogen:	Ag2181
GenBank accession number:	BC017271
Gene ID (NCBI):	10651
Full name:	Metaxin 2

### Product information

Purification method:	Antigen affinity purification
Storage:	PBS with 0.1% sodium azide and 50% glycerol pH 7.3. Store at -20°C.

at dilution of 1:600