

SHPK Polyclonal Antibody

Catalog number: 12441-1-AP

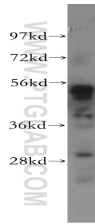
Size: 20 µg/150 µl

Source: Rabbit

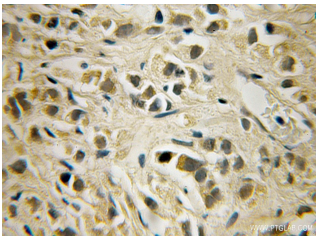
Isotype: IgG

Synonyms:

SHPK; CARKL; FLJ32478; SHK



HEK-293 cells were subjected to SDS PAGE followed by western blot with 12441-1-AP(SHPK Antibody) at dilution of 1:1200



Immunohistochemistry of paraffin-embedded human prostate cancer using 12441-1-AP(SHPK Antibody) at Dilution 1:50 (under 10x lens)

Applications

Tested applications:	ELISA, WB, IHC
Species specificity:	Human, mouse, rat; other species not tested.
Positive WB detected in:	HEK-293 cells, human heart tissue
Calculated SHPK MW:	478aa,52kd
Observed SHPK MW:	52kd
Positive IHC detected in:	Human prostate cancer
Recommended dilution:	WB: 1:500-1:5000 IHC: 1:20-1:200

Application key: WB = Western blotting, IHC = Immunohistochemistry, IF = Immunofluorescence, IP = Immunoprecipitation, FC = Flow cytometry

Immunogen information

Immunogen:	Ag3150
GenBank accession number:	BC020543
Gene ID (NCBI):	23729
Full name:	Sedoheptulokinase

Product information

Purification method:	Antigen affinity purification
Storage:	PBS with 0.1% sodium azide and 50% glycerol pH 7.3. Store at -20°C.