

calreticulin Polyclonal Antibody

Catalog number: 10292-1-AP

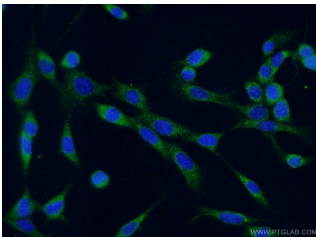
Size: 56 µg/150 µl

Source: Rabbit

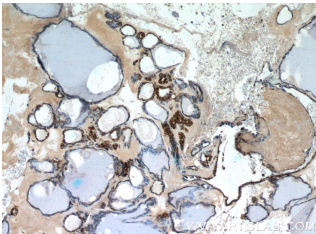
Isotype: IgG

Synonyms:

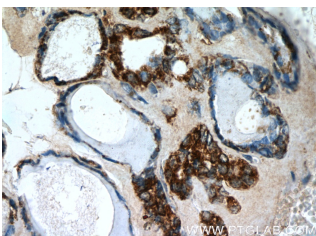
CALR; CALR, Calregulin, calreticulin, cC1qR, CRP55, CRT, CRTC, ERp60, FLJ26680, grp60, HACBP, RO, SSA



Immunofluorescent analysis of (-20 Ethanol) fixed NIH/3T3 cells using 10292-1-AP(calreticulin Antibody) at dilution of 1:50 and Alexa Fluor 488-conjugated AffiniPure Goat Anti-Rabbit IgG(H+L)



Immunohistochemistry of paraffin-embedded human thyroid tissue slide using 10292-1-AP(calreticulin Antibody) at dilution of 1:50 (under 10x lens)



Immunohistochemistry of paraffin-embedded human thyroid tissue slide using 10292-1-AP(calreticulin Antibody) at dilution of 1:50 (under 40x lens)

Background

CALR, also named as grp60, ERp60, HACBP, CRP55, CRTC and Calregulin, belongs to the calreticulin family. It is a molecular calcium-binding chaperone promoting folding, oligomeric assembly and quality control in the ER via the calreticulin/calnexin cycle. CALR is a ER marker. It interacts transiently with almost all of the monoglucosylated glycoproteins that are synthesized in the ER. CALR interacts with the DNA-binding domain of NR3C1 and mediates its nuclear export. The MW of CALR migrates aberrantly at 60 kD by SDS-PAGE. Some study provided that it's a new possibility for CRT-mediated tumor immune prevention and treatment.

Applications

Tested applications:	ELISA, WB, IF, IHC
Cited applications:	IF, IHC, WB
Species specificity:	Human, Rat, Mouse; other species not tested.
Cited species:	Human, rat
Calculated calreticulin MW:	60 kDa
Observed calreticulin MW:	60 kDa
Positive WB detected in	NIH/3T3 cells, COLO 320 cells, HeLa cells, HL-60 cells, human skeletal muscle tissue, MCF7 cells, mouse brain tissue
Positive IHC detected in	Human thyroid tissue, human colon cancer tissue, human ovary tumor tissue, human skeletal muscle tissue
Positive IF detected in	NIH/3T3 cells
Recommended dilution:	WB: 1:200-1:2000 IHC: 1:50-1:500 IF: 1:20-1:200

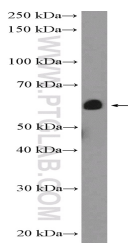
Application key: WB = Western blotting, IHC = Immunohistochemistry, IF = Immunofluorescence, IP = Immunoprecipitation

Immunogen information

Immunogen:	Ag0325
GenBank accession number:	BC002500
Gene ID (NCBI):	811
Full name:	Calreticulin

Product information

Purification method:	Antigen affinity purification
Storage:	PBS with 0.1% sodium azide and 50% glycerol pH 7.3. Store at -20°C.



NIH/3T3 cells were subjected to SDS PAGE followed by western blot with 10292-1-AP(calreticulin Antibody) at dilution of 1:600