

REEP6 Polyclonal Antibody

Catalog number: 12088-1-AP

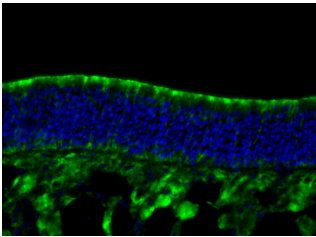
Size: 20 µg/150 µl

Source: Rabbit

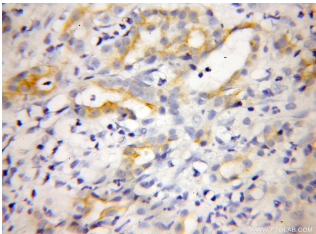
Isotype: IgG

Synonyms:

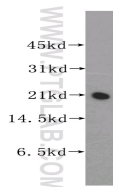
REEP6; C19orf32, DP11L1, FLJ25383, receptor accessory protein 6, REEP6, TB2L1



Fluorescent IHC on 1%PLP fixed frozen mouse olfactory epithelium tissue of REEP6 antibody (12088-1-AP, 1:100). Excellent staining of Sus cells on the apical layer as well as their basal projections. By Dr. Brian Lin (Schwob Lab).



Immunohistochemical of paraffin-embedded human pancreas cancer using 12088-1-AP(REEP6 antibody) at dilution of 1:50 (under 10x lens)



BxPC-3 cells were subjected to SDS PAGE followed by western blot with 12088-1-AP(REEP6 antibody) at dilution of 1:400

Applications

Tested applications:	ELISA, WB, IHC, IF
Species specificity:	Human, Mouse, Rat; other species not tested.
Calculated REEP6 MW:	201aa, 22 kDa
Observed REEP6 MW:	22kd
Positive WB detected in	BxPC-3 cells
Positive IHC detected in	Human pancreas cancer tissue
Positive IF detected in	Mouse olfactory epithelium tissue
Recommended dilution:	WB: 1:500-1:5000
	IHC: 1:20-1:200
	IF: N/A

Application key: WB = Western blotting, IHC = Immunohistochemistry, IF = Immunofluorescence, IP = Immunoprecipitation

Immunogen information

Immunogen:	Ag2723
GenBank accession number:	BC008201
Gene ID (NCBI):	92840
Full name:	Receptor accessory protein 6

Product information

Purification method:	Antigen affinity purification
Storage:	PBS with 0.1% sodium azide and 50% glycerol pH 7.3. Store at -20°C.