

KLF12 Polyclonal Antibody

Catalog number: 13156-1-AP

Size: 30 µg/150 µl

Source: Rabbit

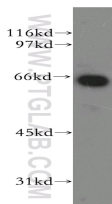
Isotype: IgG

Synonyms:

KLF12; AP 2rep, AP2REP,

HSPC122, KLF12, Krueppel like

factor 12, Kruppel like factor 12



Raji cells were subjected to SDS PAGE followed by western blot with 13156-1-AP (KLF12 antibody) at dilution of 1:400

Background

KLF12, also named as AP2REP or HSPC122, is a 402 amino acid protein, which contains three C2H2-type zinc fingers and belongs to the Sp1 C2H2-type zinc-finger protein family. KLF12 localizes in the nucleus and confers strong transcriptional repression to the AP-2-alpha gene. KLF12 is a transcriptional silencer to the AP2-alpha gene, mediating positive and negative regulation of the AP2-A expression through a set of overlapping cis-regulatory promoters elements.

Applications

Tested applications:	ELISA, WB
Cited applications:	IHC, WB
Species specificity:	Human, Mouse, Rat; other species not tested.
Cited species:	Human
Calculated KLF12 MW:	402aa, 44 kDa
Observed KLF12 MW:	65 kDa
Positive WB detected in	Raji cells, HepG2 cells, human kidney tissue
Recommended dilution:	WB: 1:500-1:5000

Application key: WB = Western blotting, IHC = Immunohistochemistry, IF = Immunofluorescence, IP = Immunoprecipitation

Immunogen information

Immunogen:	Ag3788
GenBank accession number:	BC019680
Gene ID (NCBI):	11278
Full name:	Kruppel-like factor 12

Product information

Purification method:	Antigen affinity purification
Storage:	PBS with 0.02% sodium azide and 50% glycerol pH 7.3. Store at -20°C.