

## RAD1 Polyclonal Antibody

Catalog number: 11726-2-AP

Size: 20 µg/150 µl

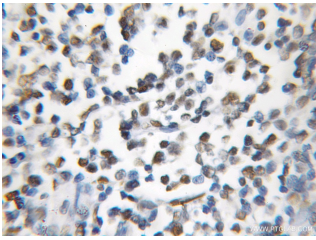
Source: Rabbit

Isotype: IgG

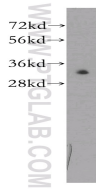
Synonyms:

RAD1; HRAD1, RAD1, RAD1

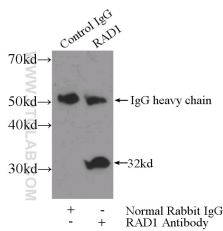
homolog (*S. pombe*), REC1



Immunohistochemical of paraffin-embedded human lymphoma using 11726-2-AP (RAD1 antibody) at dilution of 1:50 (under 10x lens)



HeLa cells were subjected to SDS PAGE followed by western blot with 11726-2-AP (RAD1 antibody) at dilution of 1:300



IP Result of anti-RAD1 (IP:11726-2-AP, 3ug; Detection:11726-2-AP 1:300) with HeLa cells lysate 3200ug.

### Background

RAD1 is also named as REC1, hRAD1. The human RAD1 and HUS1 proteins associate in a complex that interacts with a highly modified form of RAD9. They concluded that these 3 proteins are central components of a DNA damage-responsive protein complex in human cells. It has 3 isoforms produced by alternative splicing.

### Applications

Tested applications:	ELISA, WB, IHC, IP
Cited applications:	WB
Species specificity:	Human, Mouse, Rat; other species not tested.
Cited species:	Rainbow trout
Calculated RAD1 MW:	32 kDa
Observed RAD1 MW:	32kd
Positive WB detected in:	HeLa cells
Positive IP detected in:	HeLa cells
Positive IHC detected in:	Human lymphoma tissue
Recommended dilution:	WB: 1:200-1:2000
	IP: 1:200-1:1000
	IHC: 1:20-1:200

Application key: WB = Western blotting, IHC = Immunohistochemistry, IF = Immunofluorescence, IP = Immunoprecipitation

### Immunogen information

Immunogen:	Ag2316
GenBank accession number:	BC006837
Gene ID (NCBI):	5810
Full name:	RAD1 homolog ( <i>S. pombe</i> )

### Product information

Purification method:	Antigen affinity purification
Storage:	PBS with 0.1% sodium azide and 50% glycerol pH 7.3. Store at -20°C.