

## TBX22 Polyclonal Antibody

Catalog number: 11133-1-AP

Size: 45 µg/150 µl

Source: Rabbit

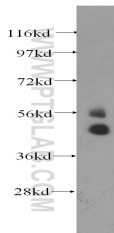
Isotype: IgG

Synonyms:

TBX22; CLPA, dJ795G23.1, T

box 22, T box protein 22,

TBOX22, TBX22, TBXX



PC-3 cells were subjected to SDS PAGE followed by western blot with 11133-1-AP(TBX22 antibody) at dilution of 1:500

### Background

The frontonasal mass gives rise to the facial midline and fuses with the maxillary prominence to form the upper lip. T-box transcription factor 22 (Tbx22) belongs to the T-box family of transcription factors, which is essential for normal craniofacial development [PMID: 20033915]. Mutation in TBX22 in the frontonasal mass is reported in families with X-linked cleft palate and ankyloglossia [PMID:19816249].

### Applications

Tested applications:	ELISA, WB
Species specificity:	Human, Mouse, Rat; other species not tested.
Calculated TBX22 MW:	58 kDa
Observed TBX22 MW:	45 kDa and 55 kDa
Positive WB detected in	PC-3 cells, mouse testis tissue
Recommended dilution:	WB: 1:200-1:2000

Application key: WB = Western blotting, IHC = Immunohistochemistry, IF = Immunofluorescence, IP = Immunoprecipitation

### Immunogen information

Immunogen:	Ag1591
GenBank accession number:	BC014194
Gene ID (NCBI):	50945
Full name:	T-box 22

### Product information

Purification method:	Antigen affinity purification
Storage:	PBS with 0.1% sodium azide and 50% glycerol pH 7.3. Store at -20°C.