

## Fibulin 5 Polyclonal Antibody

Catalog number: 12188-1-AP

Size: 20 µg/150 µl

Source: Rabbit

Isotype: IgG

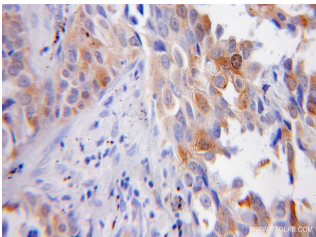
Synonyms:

FBLN5; ARMD3, DANCE, EVEC,

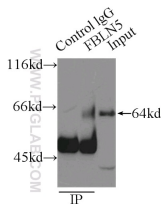
FBLN5, FIBL 5, fibulin 5,

FLJ90059, UP50, Urine p50

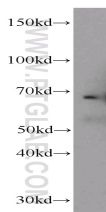
protein



Immunohistochemical of paraffin-embedded human lung cancer using 12188-1-AP(FBLN5 antibody) at dilution of 1:50 (under 10x lens)



IP Result of anti-FBLN5 (IP:12188-1-AP, 3µg; Detection:12188-1-AP 1:300) with mouse heart tissue lysate 8000µg.



mouse heart tissue were subjected to SDS PAGE followed by western blot with 12188-1-AP(FBLN5 antibody) at dilution of 1:400

### Background

Fibulin-5, also known as EVEC and DANCE, is a extracellular matrix glycoprotein, secreted by various cell types such as vascular smooth muscle cells, fibroblasts and endothelial cells. Structurally, Fibulin-5 contains an Arg-Gly-Asp (RGD) motif and calcium-binding EGF-like domains. It promotes adhesion of endothelial cells through interaction of integrins and the RGD motif. FBLN5 mutations have been described in patients with age-related macular degeneration, as well as being involved in Charcot-Marie-Tooth neuropathies. This antibody got 50kd or 66kd band in western blotting, the 66kd corresponding to fully glycosylated protein.

### Applications

Tested applications:	ELISA, WB, IHC, IP
Cited applications:	IHC, WB
Species specificity:	Human,Mouse,Rat; other species not tested.
Cited species:	Mouse
Calculated Fibulin 5 MW:	448aa,50 kDa
Observed Fibulin 5 MW:	64-66 kDa
Positive WB detected in	Mouse heart tissue, mouse placenta tissue, rat brain tissue
Positive IP detected in	Mouse heart tissue
Positive IHC detected in	Human lung cancer tissue, human heart tissue, human pancreas tissue
Recommended dilution:	WB: 1:200-1:2000 IP: 1:200-1:1000 IHC: 1:20-1:200

Application key: WB = Western blotting, IHC = Immunohistochemistry, IF = Immunofluorescence, IP = Immunoprecipitation

### Immunogen information

Immunogen:	Ag2859
GenBank accession number:	BC022280
Gene ID (NCBI):	10516
Full name:	Fibulin 5

### Product information

Purification method:	Antigen affinity purification
Storage:	PBS with 0.1% sodium azide and 50% glycerol pH 7.3. Store at -20°C.