

KRR1 Polyclonal Antibody

Catalog number: 12772-1-AP

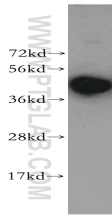
Size: 30 µg/150 µl

Source: Rabbit

Isotype: IgG

Synonyms:

KRR1; HRB2; RIP-1



human brain tissue were subjected to SDS PAGE followed by western blot with 12772-1-AP(KRR1 Antibody) at dilution of 1:1200

Applications

Tested applications:	ELISA, WB
Species specificity:	Human, mouse, rat; other species not tested.
Positive WB detected in:	Human brain tissue, human kidney tissue
Calculated KRR1 MW:	381aa,44kd
Observed KRR1 MW:	44kd
Recommended dilution:	WB: 1:500-1:5000

Application key: WB = Western blotting, IHC = Immunohistochemistry, IF = Immunofluorescence, IP =

Immunoprecipitation, FC = Flow cytometry

Immunogen information

Immunogen:	Ag3464
GenBank accession number:	BC026107
Gene ID (NCBI):	11103
Full name:	KRR1, small subunit (SSU) processome component, homolog (yeast)

Product information

Purification method:	Antigen affinity purification
Storage:	PBS with 0.1% sodium azide and 50% glycerol pH 7.3. Store at -20°C.