

Autotaxin Polyclonal Antibody

Catalog number: 14243-1-AP

Size: 20 µg/150 µl

Source: Rabbit

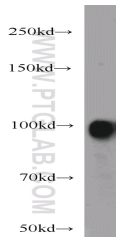
Isotype: IgG

Synonyms:

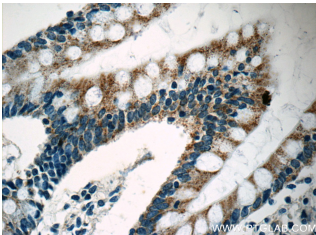
ENPP2; ATX, ATX X, Autotaxin,

E NPP 2, ENPP2, FLJ26803,

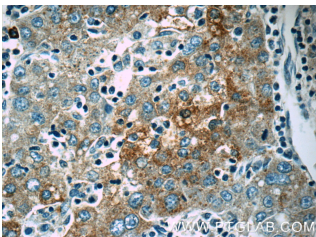
LysoPLD, PD IALPHA, PDNP2



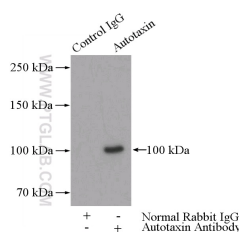
mouse brain tissue were subjected to SDS PAGE followed by western blot with 14243-1-AP(ENPP2 antibody) at dilution of 1:500



Immunohistochemistry of paraffin-embedded human small intestine tissue slide using 14243-1-AP(ENPP2 Antibody) at dilution of 1:50



Immunohistochemistry of paraffin-embedded human liver cancer tissue slide using 14243-1-AP(ENPP2 Antibody) at dilution of 1:50 (under 40x lens)



IP Result of anti-ENPP2

(IP:14243-1-AP, 5µg;

Applications

Tested applications:	ELISA, WB, IHC, IP
Species specificity:	Human, Mouse, Rat; other species not tested.
Calculated Autotaxin MW:	99 kDa
Observed Autotaxin MW:	100-110kd
Positive WB detected in	Mouse brain tissue, human placenta tissue, rat brain tissue
Positive IP detected in	Mouse brain tissue
Positive IHC detected in	Human liver cancer tissue, human small intestine tissue
Recommended dilution:	WB: 1:200-1:2000 IP: 1:200-1:2000 IHC: 1:20-1:200

Application key: WB = Western blotting, IHC = Immunohistochemistry, IF = Immunofluorescence, IP = Immunoprecipitation

Immunogen information

Immunogen:	Ag5499
GenBank accession number:	BC034961
Gene ID (NCBI):	5168
Full name:	Ectonucleotide pyrophosphatase/phosphodiesterase 2

Product information

Purification method:	Antigen affinity purification
Storage:	PBS with 0.1% sodium azide and 50% glycerol pH 7.3. Store at -20°C.

Detection:14243-1-AP 1:500)
with mouse brain tissue lysate
4000ug.