

## ESRRG Polyclonal Antibody

Catalog number: 14017-1-AP

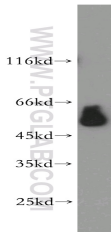
Size: 36 µg/150 µl

Source: Rabbit

Isotype: IgG

Synonyms:

ESRRG; DKFZp781L1617, ERR  
gamma 2, ERR3, ERRG2,  
ERRgamma, ESRRG, estrogen  
related receptor gamma,  
FLJ16023, KIAA0832, NR3B3



human spleen tissue were subjected to SDS PAGE followed by western blot with 14017-1-AP(ESRRG antibody) at dilution of 1:1000

### Background

Estrogen-related receptor gamma (ERR-gamma), also known as NR3B3 (nuclear receptor subfamily 3, group B, member 3), is a member of nuclear hormone receptor family of steroid hormone receptors. As an orphan nuclear receptor, it binds specifically to an estrogen response element and activates reporter genes controlled by estrogen response elements. It behaves as a constitutive activator of transcription. 4-hydroxytamoxifen and diethylstilbestrol may act as inverse agonists and deactivate ESRRG. It also seems to be the target of bisphenol A. This antibody is a rabbit polyclonal antibody raised against residues near the C terminus of human ESRRG.

### Applications

Tested applications:	ELISA, WB
Species specificity:	Human, Mouse, Rat; other species not tested.
Calculated ESRRG MW:	51 kDa
Observed ESRRG MW:	51kd
Positive WB detected in	Human spleen tissue, human kidney tissue
Recommended dilution:	WB: 1:1000-1:10000

Application key: WB = Western blotting, IHC = Immunohistochemistry, IF = Immunofluorescence, IP = Immunoprecipitation

### Immunogen information

Immunogen:	Ag5127
GenBank accession number:	BC064700
Gene ID (NCBI):	2104
Full name:	Estrogen-related receptor gamma

### Product information

Purification method:	Antigen affinity purification
Storage:	PBS with 0.02% sodium azide and 50% glycerol pH 7.3. Store at -20°C.