

IGSF11 Polyclonal Antibody

Catalog number: 14003-1-AP

Size: 35 µg/150 µl

Source: Rabbit

Isotype: IgG

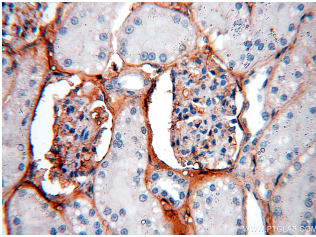
Synonyms:

IGSF11; BT-IgSF; CXADRL1;

Igsf13; MGC35227; VSIG3



human brain tissue were subjected to SDS PAGE followed by western blot with 14003-1-AP(IGSF11 Antibody) at dilution of 1:600



Immunohistochemistry of paraffin-embedded human kidney using 14003-1-AP(IGSF11 Antibody) at Dilution 1:50 (under 40x lens)

Applications

Tested applications:	ELISA, WB, IHC
Species specificity:	Human, mouse, rat; other species not tested.
Positive WB detected in:	Human brain tissue, mouse skeletal muscle tissue
Calculated IGSF11 MW:	430aa,46kd
Observed IGSF11 MW:	40-50kd
Positive IHC detected in:	Human kidney
Recommended dilution:	WB: 1:200-1:2000 IHC: 1:20-1:200

Application key: WB = Western blotting, IHC = Immunohistochemistry, IF = Immunofluorescence, IP = Immunoprecipitation, FC = Flow cytometry

Immunogen information

Immunogen:	Ag5094
GenBank accession number:	BC034411
Gene ID (NCBI):	152404
Full name:	Immunoglobulin superfamily, member 11

Product information

Purification method:	Antigen affinity purification
Storage:	PBS with 0.02% sodium azide and 50% glycerol pH 7.3. Store at -20°C.