

SEPT1 Polyclonal Antibody

Catalog number: 11370-1-AP

Size: 45 µg/150 µl

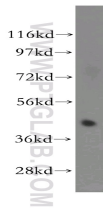
Source: Rabbit

Isotype: IgG

Synonyms:

SEPT1; DIFF6; LARP;

MGC20394; PNU TL3; SEP1



Jurkat cells were subjected to SDS PAGE followed by western blot with 11370-1-AP (SEPT1 Antibody) at dilution of 1:500

Applications

Tested applications:	ELISA, WB
Species specificity:	Human, mouse, rat; other species not tested.
Positive WB detected in:	Jurkat cells
Calculated SEPT1 MW:	367aa, 42kd
Observed SEPT1 MW:	46kd
Recommended dilution:	WB: 1:200-1:2000

Application key: WB = Western blotting, IHC = Immunohistochemistry, IF = Immunofluorescence, IP = Immunoprecipitation, FC = Flow cytometry

Immunogen information

Immunogen:	Ag1926
GenBank accession number:	BC012161
Gene ID (NCBI):	1731
Full name:	Septin 1

Product information

Purification method:	Antigen affinity purification
Storage:	PBS with 0.1% sodium azide and 50% glycerol pH 7.3. Store at -20°C.