

KPNA5 Polyclonal Antibody

Catalog number: 13963-1-AP

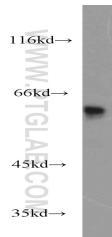
Size: 39 µg/150 µl

Source: Rabbit

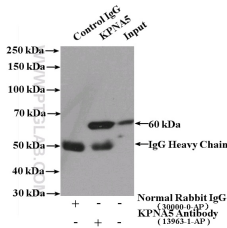
Isotype: IgG

Synonyms:

KPNA5; Importin subunit alpha 6, IPOA6, Karyopherin subunit alpha 5, KPNA5, SRP6



Jurkat cells were subjected to SDS PAGE followed by western blot with 13963-1-AP (KPNA5 antibody) at dilution of 1:2000



IP Result of anti-KPNA5 (IP:13963-1-AP, 4µg; Detection:13963-1-AP 1:2000) with Jurkat cells lysate 4000µg.

Applications

| | |
|-------------------------|--|
| Tested applications: | ELISA, WB, IP |
| Cited applications: | WB |
| Species specificity: | Human, Mouse, Rat; other species not tested. |
| Cited species: | Human |
| Calculated KPNA5 MW: | 60 kDa |
| Observed KPNA5 MW: | 60 kDa |
| Positive WB detected in | Jurkat cells |
| Positive IP detected in | Jurkat cells |
| Recommended dilution: | WB: 1:1000-1:10000 IP: 1:1000-1:10000 |

Application key: WB = Western blotting, IHC = Immunohistochemistry, IF = Immunofluorescence, IP = Immunoprecipitation

Immunogen information

| | |
|---------------------------|--|
| Immunogen: | Ag4920 |
| GenBank accession number: | BC047409 |
| Gene ID (NCBI): | 3841 |
| Full name: | Karyopherin alpha 5 (importin alpha 6) |

Product information

| | |
|----------------------|--|
| Purification method: | Antigen affinity purification |
| Storage: | PBS with 0.02% sodium azide and 50% glycerol pH 7.3. Store at -20°C. |