

TDP-43 (C-terminal) Polyclonal Antibody

Catalog number: 12892-1-AP

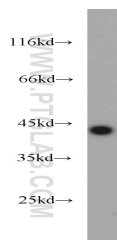
Size: 61 µg/150 µl

Source: Rabbit

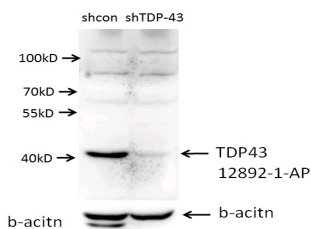
Isotype: IgG

Synonyms:

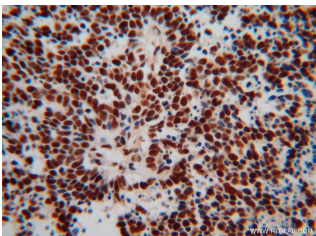
TARDBP; ALS10, TAR DNA binding protein, TAR DNA binding protein 43, TARDBP, TDP 43, TDP43



HeLa cells were subjected to SDS PAGE followed by western blot with 12892-1-AP (TARDBP antibody) at dilution of 1:1000



A549 cells (shcontrol and shRNA of TDP43) were subjected to SDS PAGE followed by western blot with 12892-1-AP (TDP43 antibody) at dilution of 1:1000. (Data provided by Angran Biotech (www.miRNAlab.com)).



Immunohistochemical of paraffin-embedded human lung cancer using 12892-1-AP (TARDBP antibody) at dilution of 1:100 (under 40x lens)

Background

Transactivation response (TAR) DNA-binding protein of 43 kDa (also known as TARDBP or TDP-43) was first isolated as a transcriptional inactivator binding to the TAR DNA element of the HIV-1 virus. Neumann et al. (2006) found that a hyperphosphorylated, ubiquitinated, and cleaved form of TARDBP, known as pathologic TDP-43, is the major component of the tau-negative and ubiquitin-positive inclusions that characterize amyotrophic lateral sclerosis (ALS) and the most common pathological subtype of frontotemporal lobar degeneration (FTLD-U). 12892-1-AP is a rabbit polyclonal antibody raised against the C-terminal amino acids of human TDP-43. This antibody recognizes the cleavage product of 20-30 kDa in addition to the native and phosphorylated forms of TDP-43. Immunohistochemical analyses of TDP-43 using this antibody detect both normal diffuse nuclear staining and insoluble inclusions in pathologic tissues.

Applications

Tested applications:	ELISA, IHC, IF, IP, WB
Cited applications:	IF, IHC, IP, WB
Species specificity:	Human, Mouse, Rat; other species not tested.
Cited species:	Human, monkey, mouse, zebrafish
Calculated TDP-43 (C-terminal) MW:	43 kDa
Observed TDP-43 (C-terminal) MW:	43-45 kDa, 35 kDa
Positive WB detected in	HeLa cells, A2780 cells, A549 cells, C6 cells, human heart tissue, human placenta tissue, K-562 cells, mouse heart tissue, mouse pancreas tissue
Positive IP detected in	HeLa cells, mouse brain tissue
Positive IHC detected in	Human lung cancer tissue, human gliomas tissue, mouse brain tissue, mouse pancreas tissue
Positive IF detected in	A549 cells, HeLa cells
Recommended dilution:	WB: 1:500-1:5000 IP: 1:500-1:5000 IHC: 1:20-1:200 IF: 1:20-1:200

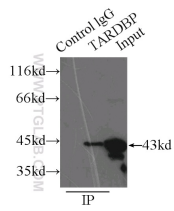
Application key: WB = Western blotting, IHC = Immunohistochemistry, IF = Immunofluorescence, IP = Immunoprecipitation

Immunogen information

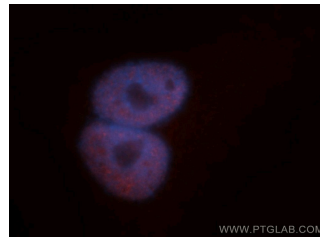
Immunogen:	Ag4003
GenBank accession number:	BC001487
Gene ID (NCBI):	23435
Full name:	TAR DNA binding protein

Product information

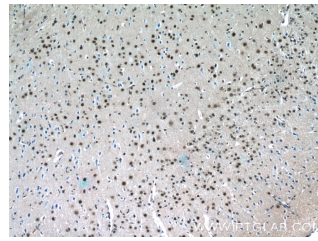
Purification method:	Antigen affinity purification
Storage:	PBS with 0.1% sodium azide and 50% glycerol pH 7.3. Store at -20°C.



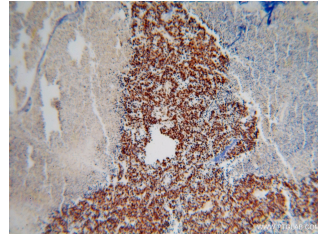
**IP Result of anti-TARDBP
(IP:12892-1-AP, 3ug;
Detection:12892-1-AP 1:1000)
with HeLa cells lysate 3000ug.**



**Immunofluorescent analysis
of A549 cells, using TARDBP
antibody 12892-1-AP at 1:50
dilution and Rhodamine-
labeled goat anti-rabbit IgG
(red). Blue pseudocolor =
DAPI (fluorescent DNA dye).**



**Immunohistochemistry of
paraffin-embedded mouse
brain tissue slide using 12892-
1-AP(TDP-43 Antibody) at
dilution of 1:50 (under 10x
lens)**



**Immunohistochemical of
paraffin-embedded human
lung cancer using 12892-1-
AP(TARDBP antibody) at
dilution of 1:100 (under 10x
lens)**