

SP100 Polyclonal Antibody

Catalog number: 11377-1-AP

Size: 90 µg/150 µl

Source: Rabbit

Isotype: IgG

Synonyms:

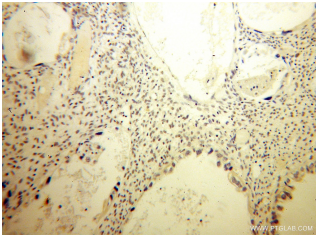
SP100; DKFZp686E07254,

FLJ00340, FLJ34579, Lysp100b,

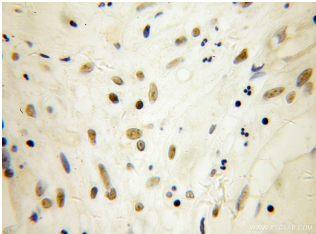
Nuclear autoantigen Sp 100,

SP100, SP100 nuclear antigen,

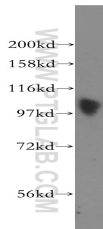
Speckled 100 kDa



Immunohistochemical of paraffin-embedded human ovary tumor using 11377-1-AP(SP100 antibody) at dilution of 1:50 (under 10x lens)



Immunohistochemical of paraffin-embedded human ovary tumor using 11377-1-AP(SP100 antibody) at dilution of 1:50 (under 40x lens)



Jurkat cells were subjected to SDS PAGE followed by western blot with 11377-1-AP(SP100 antibody) at dilution of 1:400

Background

SP100 nuclear antigen, belongs to the nuclear bodies(NBs), has a role in the control of gene expression. It contains a HSR domain, which is important for the nuclear body targeting as well as for the dimerization, and one PxVxL motif, which is required for interaction with chromoshadow domains.

Applications

Tested applications:	ELISA, WB, IHC
Cited applications:	IF, WB
Species specificity:	Human; other species not tested.
Cited species:	Human
Calculated SP100 MW:	879aa,100 kDa
Observed SP100 MW:	100 kDa
Positive WB detected in:	Jurkat cells
Positive IHC detected in:	Human ovary tumor tissue
Recommended dilution:	WB: 1:200-1:2000 IHC: 1:20-1:200

Application key: WB = Western blotting, IHC = Immunohistochemistry, IF = Immunofluorescence, IP = Immunoprecipitation

Immunogen information

Immunogen:	Ag1939
GenBank accession number:	BC011562
Gene ID (NCBI):	6672
Full name:	SP100 nuclear antigen

Product information

Purification method:	Antigen affinity purification
Storage:	PBS with 0.1% sodium azide and 50% glycerol pH 7.3. Store at -20°C.