

MTG1 Polyclonal Antibody

Catalog number: 13742-1-AP

Size: 26 µg/150 µl

Source: Rabbit

Isotype: IgG

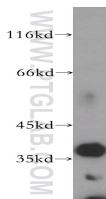
Synonyms:

MTG1; GTP, GTP binding

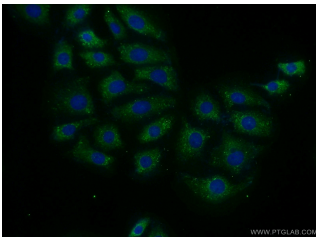
protein 7, GTPBP7,

Mitochondrial GTPase 1, MTG1,

RP11 108K14.2



human brain tissue were subjected to SDS PAGE followed by western blot with 13742-1-AP(MTG1 antibody) at dilution of 1:300



Immunofluorescent analysis of (-20 Ethanol) fixed SH-SY5Y cells using 13742-1-AP(MTG1 Antibody) at dilution of 1:50 and Alexa Fluor 488-conjugated AffiniPure Goat Anti-Rabbit IgG(H+L)

Applications

Tested applications:	ELISA, WB, IF
Species specificity:	Human,Mouse,Rat; other species not tested.
Calculated MTG1 MW:	300aa,33 kDa
Observed MTG1 MW:	37 kDa
Positive WB detected in	Human brain tissue, human liver tissue
Positive IF detected in	SH-SY5Y cells
Recommended dilution:	WB: 1:1000-1:10000 IF: 1:20-1:200

Application key: WB = Western blotting, IHC = Immunohistochemistry, IF = Immunofluorescence, IP = Immunoprecipitation

Immunogen information

Immunogen:	Ag4681
GenBank accession number:	BC035721
Gene ID (NCBI):	92170
Full name:	Mitochondrial GTPase 1 homolog (<i>S. cerevisiae</i>)

Product information

Purification method:	Antigen affinity purification
Storage:	PBS with 0.02% sodium azide and 50% glycerol pH 7.3. Store at -20°C.