

## MLF1IP Polyclonal Antibody

Catalog number: 13186-1-AP

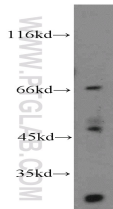
Size: 20 µg/150 µl

Source: Rabbit

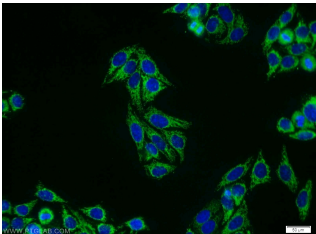
Isotype: IgG

Synonyms:

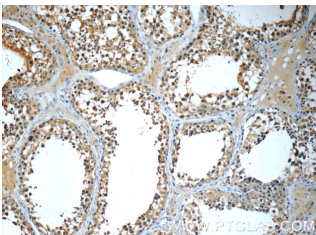
MLF1IP; CENP 50, CENP U, CENP U(50), CENP50, CENPU, centromere protein of 50 kDa, Centromere protein U, FLJ23468, ICEN24, KLIP1, MLF1 interacting protein, MLF1IP, PBIP1, Polo box interacting protein 1



HepG2 cells were subjected to SDS PAGE followed by western blot with 13186-1-AP(MLF1IP antibody) at dilution of 1:500



Immunofluorescent analysis of HepG2 cells using 13186-1-AP( MLF1IP Antibody) at dilution of 1:25 and Alexa Fluor 488-conjugated AffiniPure Goat Anti-Rabbit IgG(H+L)



Immunohistochemistry of paraffin-embedded human testis tissue slide using 13186-1-AP( MLF1IP Antibody) at dilution of 1:50 (under 10x lens)

### Applications

Tested applications:	ELISA, WB, IHC, IF
Species specificity:	Human, Mouse, Rat; other species not tested.
Calculated MLF1IP MW:	418aa, 48 kDa
Observed MLF1IP MW:	46-48kd
Positive WB detected in	HepG2 cells
Positive IHC detected in	Human testis tissue, human colon tissue, human gliomas tissue
Positive IF detected in	HepG2 cells
Recommended dilution:	WB: 1:200-1:2000 IHC: 1:20-1:200 IF: 1:10-1:100

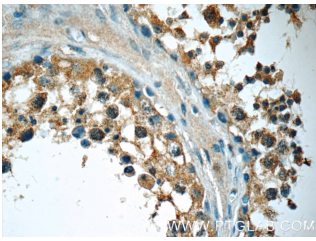
Application key: WB = Western blotting, IHC = Immunohistochemistry, IF = Immunofluorescence, IP = Immunoprecipitation

### Immunogen information

Immunogen:	Ag3858
GenBank accession number:	BC031520
Gene ID (NCBI):	79682
Full name:	MLF1 interacting protein

### Product information

Purification method:	Antigen affinity purification
Storage:	PBS with 0.02% sodium azide and 50% glycerol pH 7.3. Store at -20°C.



**Immunohistochemistry of paraffin-embedded human testis tissue slide using 13186-1-AP( MLF1IP Antibody) at dilution of 1:50 (under 40x lens)**