

Cytokeratin 14 Polyclonal Antibody

Catalog number: 10143-1-AP

Size: 22 µg/150 µl

Source: Rabbit

Isotype: IgG

Synonyms:

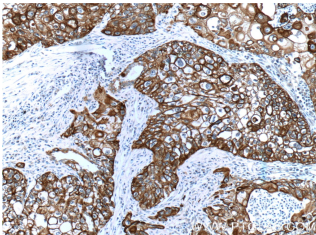
KRT14; CK 14, CK14,

Cytokeratin 14, EBS3, EBS4,

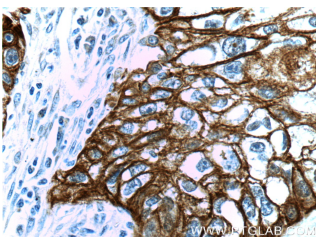
K14, keratin 14, KRT14, NFJ



A431 cells were subjected to SDS PAGE followed by western blot with 10143-1-AP (KRT14 antibody) at dilution of 1:1000



Immunohistochemistry of paraffin-embedded human lung cancer tissue slide using 10143-1-AP (KRT14 Antibody) at dilution of 1:200 (under 10x lens)



Immunohistochemistry of paraffin-embedded human lung cancer tissue slide using 10143-1-AP (KRT14 Antibody) at dilution of 1:200 (under 40x lens)

Background

Keratins are a large family of proteins that form the intermediate filament cytoskeleton of epithelial cells, which are classified into two major sequence types. Type I keratins are a group of acidic intermediate filament proteins, including K9–K23, and the hair keratins Ha1–Ha8. Type II keratins are the basic or neutral counterparts to the acidic type I keratins, including K1–K8, and the hair keratins, Hb1–Hb6. Keratin 14 is a type I cytokeratin. It is usually found as a heterotetramer with keratin 5. Keratins K14 and K5 have long been considered to be biochemical markers of the stratified squamous epithelia, including epidermis.

Applications

Tested applications:	ELISA, WB, IF, IP, IHC
Cited applications:	IF, IHC
Species specificity:	Human, Mouse, Rat; other species not tested.
Cited species:	Mouse
Calculated Cytokeratin 14 MW:	472aa, 52 kDa
Observed Cytokeratin 14 MW:	47-50 kDa
Positive WB detected in	A431 cells, rat skin tissue
Positive IP detected in	A431 cells
Positive IHC detected in	Human lung cancer tissue, human cervical cancer tissue, human kidney tissue, human liver tissue, human oesophagus cancer tissue, human placenta tissue, human prostate hyperplasia tissue, human skin cancer tissue, human skin tissue, mouse skin tissue
Positive IF detected in	HepG2 cells, MCF-7 cells, mouse olfactory epithelium tissue
Recommended dilution:	WB: 1:500-1:5000 IP: 1:500-1:5000 IHC: 1:20-1:200 IF: 1:20-1:200

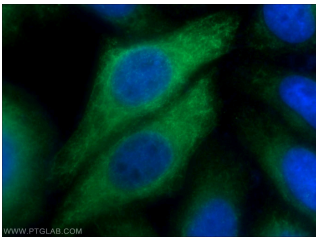
Application key: WB = Western blotting, IHC = Immunohistochemistry, IF = Immunofluorescence, IP = Immunoprecipitation

Immunogen information

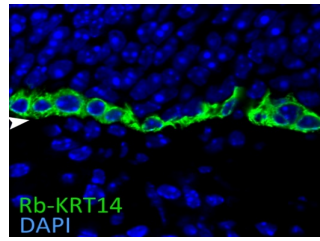
Immunogen:	Ag0188
GenBank accession number:	BC002690
Gene ID (NCBI):	3861
Full name:	Keratin 14

Product information

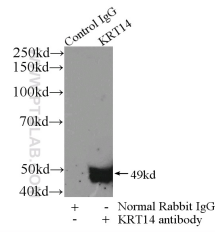
Purification method:	Antigen affinity purification
Storage:	PBS with 0.02% sodium azide and 50% glycerol pH 7.3. Store at -20°C.



Immunofluorescent analysis of HepG2 cells using 10143-1-AP (KRT14 Antibody) at dilution of 1:50 and Alexa Fluor 488-conjugated AffiniPure Goat Anti-Rabbit IgG(H+L)



IF result of CK14 (10143-1-AP, 1:400) with 1% PLP fixed basal quiescent stem cells of the adult mouse olfactory epithelium. (Green: CK14; Blue: DAPI). Basal lamina is marked by an arrow head. By Brian Lin, Tufts University.



IP Result of anti-KRT14 (IP:10143-1-AP, 3ug; Detection:10143-1-AP 1:1000) with A431 cells lysate 1200ug.