

Alpha-2-antiplasmin Polyclonal Antibody

Catalog number: 13228-1-AP

Size: 31 µg/150 µl

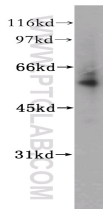
Source: Rabbit

Isotype: IgG

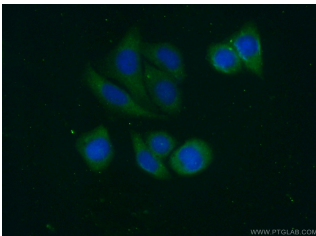
Synonyms:

SERPINF2; A2AP, AAP, Alpha 2 antiplasmin, Alpha 2 AP,

ALPHA 2 PI, Alpha 2 plasmin inhibitor, Alpha-2-antiplasmin, API, PLI, Serpin F2, SERPINF2



human liver tissue were subjected to SDS PAGE followed by western blot with 13228-1-AP(SERPINF2 antibody) at dilution of 1:500



Immunofluorescent analysis of (-20 Ethanol) fixed HepG2 cells using 13228-1-AP(SERPINF2 Antibody) at dilution of 1:100 and Alexa Fluor 488-conjugated AffiniPure Goat Anti-Rabbit IgG(H+L)

Applications

Tested applications:	ELISA, WB, IF
Cited applications:	WB
Species specificity:	Human,Mouse,Rat; other species not tested.
Cited species:	Human
Calculated Alpha-2-antiplasmin MW:	491aa,55 kDa
Observed Alpha-2-antiplasmin MW:	55 kDa
Positive WB detected in	Human liver tissue
Positive IF detected in	HepG2 cells
Recommended dilution:	WB: 1:500-1:5000 IF: 1:50-1:500

Application key: WB = Western blotting, IHC = Immunohistochemistry, IF = Immunofluorescence, IP = Immunoprecipitation

Immunogen information

Immunogen:	Ag4095
GenBank accession number:	BC031592
Gene ID (NCBI):	5345
Full name:	Serpin peptidase inhibitor, clade F (alpha-2 antiplasmin, pigment epithelium derived factor), member 2

Product information

Purification method:	Antigen affinity purification
Storage:	PBS with 0.02% sodium azide and 50% glycerol pH 7.3. Store at -20°C.