

CRTC2,TORC2 Polyclonal Antibody

Catalog number: 12497-1-AP

Size: 67 µg/150 µl

Source: Rabbit

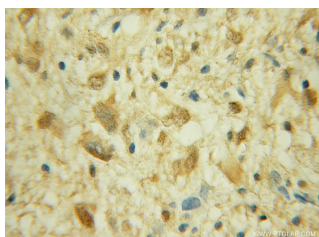
Isotype: IgG

Synonyms:

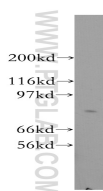
CRTC2; CRTC2, RP11 422P24.6,
TORC 2, TORC2, Transducer of
CREB protein 2



Immunofluorescent analysis of Hela cells, using CRTC2 antibody 12497-1-AP at 1:50 dilution and FITC-labeled donkey anti-rabbit IgG (green). Blue pseudocolor = DAPI (fluorescent DNA dye).



Immunohistochemical of paraffin-embedded human gliomas using 12497-1-AP(CRTC2,TORC2 antibody) at dilution of 1:100 (under 10x lens)



HepG2 cells were subjected to SDS PAGE followed by western blot with 12497-1-AP(CRTC2,TORC2 antibody) at dilution of 1:300

Background

CRTC2, also named as TORC2, belongs to the TORC family. It is a transcriptional coactivator for CREB1 which activates transcription through both consensus and variant cAMP response element (CRE) sites. It acts as a coactivator, in the SIK/TORC signaling pathway, being active when dephosphorylated and acts independently of CREB1 'Ser-133' phosphorylation. CRTC2 enhances the interaction of CREB1 with TAF4. It regulates gluconeogenesis as a component of the LKB1/AMPK/TORC2 signaling pathway. CRTC2 regulates the expression of specific genes such as the steroidogenic gene, StAR. TORC2 was recently shown to be an important regulator of gluconeogenesis in the livers of mammals. It is one of the other key regulators of CRE-dependent MIE gene expression in NT2 cells. This regulation is linked to VIP-induced TORC2 dephosphorylation and translocation to the nucleus. (PMID: 19369332, 20504934) .

Applications

Tested applications:	ELISA, WB, IHC, IF
Cited applications:	IF, IHC, WB
Species specificity:	Human, Mouse, Rat; other species not tested.
Cited species:	Human, mouse
Calculated CRTC2,TORC2 MW:	693aa, 73kd
Observed CRTC2,TORC2 MW:	73kd
Positive WB detected in	HepG2 cells, HEK-293 cells, mouse liver tissue
Positive IHC detected in	Human gliomas tissue
Positive IF detected in	Hela cells
Recommended dilution:	WB: 1:500-1:5000 IHC: 1:20-1:200 IF: 1:20-1:200

Application key: WB = Western blotting, IHC = Immunohistochemistry, IF = Immunofluorescence, IP = Immunoprecipitation

Immunogen information

Immunogen:	Ag3167
GenBank accession number:	BC053562
Gene ID (NCBI):	200186
Full name:	CREB regulated transcription coactivator 2

Product information

Purification method:	Antigen affinity purification
Storage:	PBS with 0.1% sodium azide and 50% glycerol pH 7.3. Store at -20°C.