

## GMEB2 Polyclonal Antibody

Catalog number: 13314-1-AP

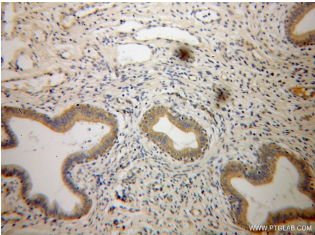
Size: 53 µg/150 µl

Source: Rabbit

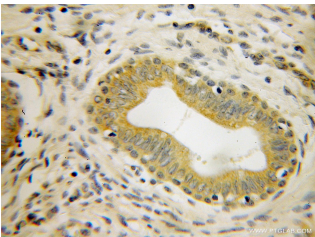
Isotype: IgG

Synonyms:

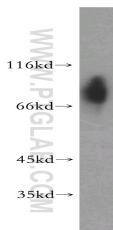
GMEB2; DNA binding protein  
p79PIF, GMEB 2, GMEB2,  
KIAA1269, P79PIF, PIF p79,  
PIF79



Immunohistochemical of paraffin-embedded human cervical cancer using 13314-1-AP (GMEB2 antibody) at dilution of 1:100 (under 10x lens)



Immunohistochemical of paraffin-embedded human cervical cancer using 13314-1-AP (GMEB2 antibody) at dilution of 1:100 (under 40x lens)



human placenta tissue were subjected to SDS PAGE followed by western blot with 13314-1-AP (GMEB2 antibody) at dilution of 1:300

### Applications

<b>Tested applications:</b>	ELISA, WB, IHC
<b>Species specificity:</b>	Human, Mouse, Rat; other species not tested.
<b>Calculated GMEB2 MW:</b>	530aa, 56 kDa
<b>Observed GMEB2 MW:</b>	79 kDa or 67 kDa
<b>Positive WB detected in</b>	Human placenta tissue, mouse ovary tissue, mouse thymus tissue
<b>Positive IHC detected in</b>	Human cervical cancer tissue
<b>Recommended dilution:</b>	WB: 1:200-1:2000 IHC: 1:20-1:200

Application key: WB = Western blotting, IHC = Immunohistochemistry, IF = Immunofluorescence, IP = Immunoprecipitation

### Immunogen information

<b>Immunogen:</b>	Ag4157
<b>GenBank accession number:</b>	BC036305
<b>Gene ID (NCBI):</b>	26205
<b>Full name:</b>	Glucocorticoid modulatory element binding protein 2

### Product information

<b>Purification method:</b>	Antigen affinity purification
<b>Storage:</b>	PBS with 0.02% sodium azide and 50% glycerol pH 7.3. Store at -20°C.