

## SFI1 Polyclonal Antibody

Catalog number: 13550-1-AP

Size: 34 µg/150 µl

Source: Rabbit

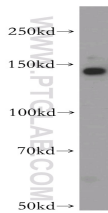
Isotype: IgG

Synonyms:

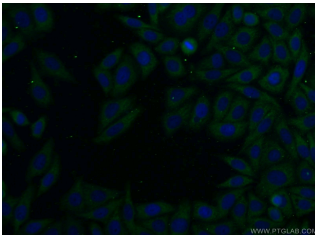
SFI1; hSFI1, hSfi1p, KIAA0542,

PISD, Protein SFI1 homolog,

RP5 858B16.1, SFI1



A549 cells were subjected to SDS PAGE followed by western blot with 13550-1-AP(SFI1 antibody) at dilution of 1:400



Immunofluorescent analysis of HepG2 cells using 13550-1-AP( SFI1 Antibody) at dilution of 1:25 and Alexa Fluor 488-conjugated AffiniPure Goat Anti-Rabbit IgG(H+L)

### Applications

Tested applications:	ELISA, WB, IF
Species specificity:	Human, Mouse; other species not tested.
Calculated SFI1 MW:	1211aa,134 kDa
Observed SFI1 MW:	148kd
Positive WB detected in	A549 cells, HepG2 cells, mouse lung tissue
Positive IF detected in	HepG2 cells, Hela cells
Recommended dilution:	WB: 1:500-1:5000 IF: 1:10-1:100

Application key: WB = Western blotting, IHC = Immunohistochemistry, IF = Immunofluorescence, IP = Immunoprecipitation

### Immunogen information

Immunogen:	Ag4268
GenBank accession number:	BC033613
Gene ID (NCBI):	9814
Full name:	Sfi1 homolog, spindle assembly associated (yeast)

### Product information

Purification method:	Antigen affinity purification
Storage:	PBS with 0.02% sodium azide and 50% glycerol pH 7.3. Store at -20°C.