

## RPA2 Polyclonal Antibody

Catalog number: 10412-1-Ap

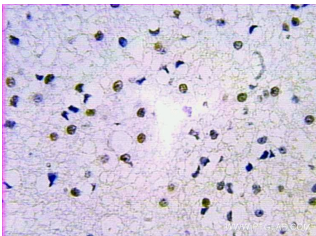
Size: 44 µg/150 µl

Source: Rabbit

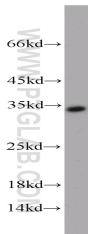
Isotype: IgG

Synonyms:

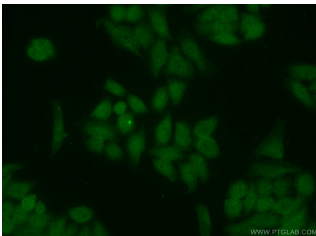
RPA2; REPA2, Replication factor A protein 2, replication protein A2, 32kDa, RF A protein 2, RP A p32, RP A p34, RPA2, RPA32, RPA34



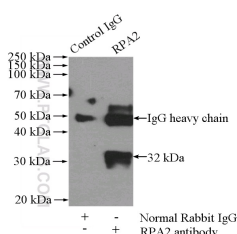
Immunohistochemical of paraffin-embedded human gliomas using 10412-1-Ap(RPA2 antibody) at dilution of 1:100 (under 25x lens)



A549 cells were subjected to SDS PAGE followed by western blot with 10412-1-Ap(RPA2 antibody) at dilution of 1:1000



Immunofluorescent analysis of HeLa cells using 10412-1-Ap( RPA2 Antibody) at dilution of 1:50 and Alexa Fluor 488-conjugated AffiniPure Goat Anti-Rabbit IgG(H+L)



### Applications

Tested applications:	ELISA, WB, IHC, IP, IF
Cited applications:	WB
Species specificity:	Human, Mouse, Rat; other species not tested.
Cited species:	Human
Calculated RPA2 MW:	29 kDa
Observed RPA2 MW:	29-32 kDa
Positive WB detected in	A549 cells, HEK-293 cells, HeLa cells, mouse brain tissue, mouse kidney tissue, SH-SY5Y cells
Positive IP detected in	Mouse kidney tissue
Positive IHC detected in	Human gliomas tissue
Positive IF detected in	HeLa cells
Recommended dilution:	WB: 1:500-1:5000 IP: 1:500-1:5000 IHC: 1:20-1:200 IF: 1:20-1:200

Application key: WB = Western blotting, IHC = Immunohistochemistry, IF = Immunofluorescence, IP = Immunoprecipitation

### Immunogen information

Immunogen:	Ag0690
GenBank accession number:	BC001630
Gene ID (NCBI):	6118
Full name:	Replication protein A2, 32kDa

### Product information

Purification method:	Antigen affinity purification
Storage:	PBS with 0.1% sodium azide and 50% glycerol pH 7.3. Store at -20°C.

**IP Result of anti-RPA2  
(IP:10412-1-Ap, 4ug;  
Detection:10412-1-Ap 1:1000)  
with mouse kidney tissue  
lysate 4000ug.**