

## CPNE6 Polyclonal Antibody

Catalog number: 13782-1-AP

Size: 20 µg/150 µl

Source: Rabbit

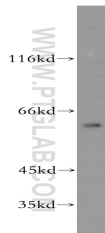
Isotype: IgG

Synonyms:

CPNE6; Copine 6, Copine VI,

copine VI (neuronal), CPNE6, N

COPINE, Neuronal copine



mouse brain tissue were subjected to SDS PAGE followed by western blot with 13782-1-AP(CPNE6 antibody) at dilution of 1:500

### Background

Copines are a family of evolutionarily conserved calcium-dependent phospholipid-binding proteins (PMID: 9430674). They contain two Ca(2+)- and phospholipid-binding domains known as C2 domains. Copines are potentially involved in regulating membrane trafficking and in protein-protein interactions.

### Applications

Tested applications:	ELISA, WB
Species specificity:	Human,Mouse,Rat; other species not tested.
Calculated CPNE6 MW:	557aa,62 kDa
Observed CPNE6 MW:	62 kDa
Positive WB detected in	Mouse brain tissue
Recommended dilution:	WB: 1:500-1:5000

Application key: WB = Western blotting, IHC = Immunohistochemistry, IF = Immunofluorescence, IP = Immunoprecipitation

### Immunogen information

Immunogen:	Ag4789
GenBank accession number:	BC018046
Gene ID (NCBI):	9362
Full name:	Copine VI (neuronal)

### Product information

Purification method:	Antigen affinity purification
Storage:	PBS with 0.02% sodium azide and 50% glycerol pH 7.3. Store at -20°C.