

RFFL Polyclonal Antibody

Catalog number: 12687-1-AP

Size: 20 µg/150 µl

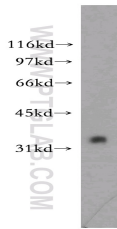
Source: Rabbit

Isotype: IgG

Synonyms:

RFFL; RIFIFYLIN; RNF189;

RNF34L



mouse testis tissue were subjected to SDS PAGE followed by western blot with 12687-1-AP(RFFL Antibody) at dilution of 1:1000

Applications

Tested applications:	ELISA, WB
Species specificity:	Human, mouse, rat; other species not tested.
Positive WB detected in:	Mouse testis tissue
Calculated RFFL MW:	327aa,37kd
Observed RFFL MW:	37kd
Recommended dilution:	WB: 1:500-1:5000

Application key: WB = Western blotting, IHC = Immunohistochemistry, IF = Immunofluorescence, IP =

Immunoprecipitation, FC = Flow cytometry

Immunogen information

Immunogen:	Ag3380
GenBank accession number:	BC028424
Gene ID (NCBI):	117584
Full name:	Ring finger and FYVE-like domain containing 1

Product information

Purification method:	Antigen affinity purification
Storage:	PBS with 0.02% sodium azide and 50% glycerol pH 7.3. Store at -20°C.