

SLC9A9 Polyclonal Antibody

Catalog number: 13718-1-AP

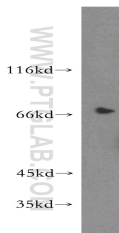
Size: 20 µg/150 µl

Source: Rabbit

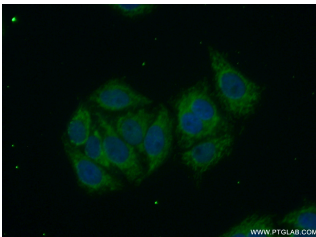
Isotype: IgG

Synonyms:

SLC9A9; FLJ35613, Na(+)/H(+)
exchanger 9, Nbla00118, NHE 9,
NHE9, SLC9A9,
Sodium/hydrogen exchanger 9



HepG2 cells were subjected to SDS PAGE followed by western blot with 13718-1-AP(SLC9A9 antibody) at dilution of 1:300



Immunofluorescent analysis of (10% Formaldehyde) fixed HepG2 cells using 13718-1-AP(SLC9A9 Antibody) at dilution of 1:50 and Alexa Fluor 488-conjugated AffiniPure Goat Anti-Rabbit IgG(H+L)

Applications

Tested applications:	ELISA, WB, IF
Species specificity:	Human,Mouse,Rat; other species not tested.
Calculated SLC9A9 MW:	645aa,73 kDa
Observed SLC9A9 MW:	66-73 kDa
Positive WB detected in	HepG2 cells, Raji cells
Positive IF detected in	HepG2 cells
Recommended dilution:	WB: 1:200-1:2000 IF: 1:20-1:200

Application key: WB = Western blotting, IHC = Immunohistochemistry, IF = Immunofluorescence, IP = Immunoprecipitation

Immunogen information

Immunogen:	Ag4660
GenBank accession number:	BC035779
Gene ID (NCBI):	285195
Full name:	Solute carrier family 9 (sodium/hydrogen exchanger), member 9

Product information

Purification method:	Antigen affinity purification
Storage:	PBS with 0.02% sodium azide and 50% glycerol pH 7.3. Store at -20°C.