

RAN Polyclonal Antibody

Catalog number: 10469-1-AP

Size: 51 µg/150 µl

Source: Rabbit

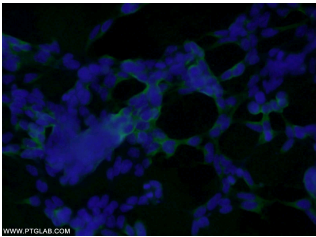
Isotype: IgG

Synonyms:

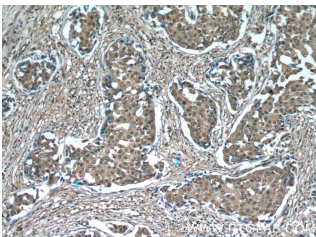
RAN; ARA24, Gsp1, GTPase

Ran, RAN, Ras like protein TC4,

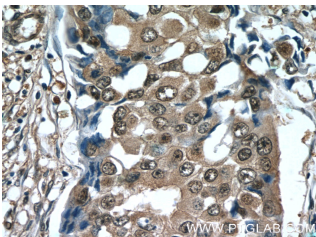
Ras related nuclear protein, TC4



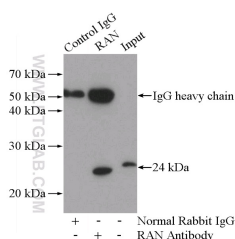
Immunofluorescent analysis of HEK-293 cells using 10469-1-AP(RAN Antibody) at dilution of 1:25 and Alexa Fluor 488-conjugated AffiniPure Goat Anti-Rabbit IgG(H+L)



Immunohistochemistry of paraffin-embedded human breast cancer tissue slide using 10469-1-AP(RAN Antibody) at dilution of 1:50 (under 10x lens)



Immunohistochemistry of paraffin-embedded human breast cancer tissue slide using 10469-1-AP(RAN Antibody) at dilution of 1:50 (under 40x lens)



Background

Lysophosphatidylcholine transferase 1 (LPCAT1) is a key enzyme for remodeling phospholipids, catalyzing the conversion of Lysophosphatidylcholine (LPC) to phosphatidylcholine (PC). LPCAT1 is predominantly expressed in lung, particularly in alveolar type II cells.

Applications

Tested applications:	ELISA, IHC, IF, IP, WB
Species specificity:	Human, Mouse, Rat; other species not tested.
Calculated RAN MW:	25 kDa
Observed RAN MW:	24 kDa
Positive WB detected in	HEK-293 cells, A375 cells, HeLa cells, Jurkat cells, mouse kidney tissue, NIH/3T3 cells, rat kidney tissue
Positive IP detected in	Mouse kidney tissue
Positive IHC detected in	Human breast cancer tissue, human testis tissue
Positive IF detected in	HEK-293 cells
Recommended dilution:	WB: 1:500-1:5000 IP: 1:500-1:5000 IHC: 1:20-1:200 IF: 1:10-1:100

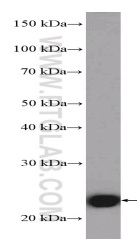
Application key: WB = Western blotting, IHC = Immunohistochemistry, IF = Immunofluorescence, IP = Immunoprecipitation

Immunogen information

Immunogen:	Ag0748
GenBank accession number:	BC004272
Gene ID (NCBI):	5901
Full name:	RAN, member RAS oncogene family

Product information

Purification method:	Antigen affinity purification
Storage:	PBS with 0.1% sodium azide and 50% glycerol pH 7.3. Store at -20°C.



**IP Result of anti-RAN
(IP:10469-1-AP, 4ug;
Detection:10469-1-AP 1:1000)
with mouse kidney tissue
lysate 4000ug.**

**HEK-293 cells were subjected
to SDS PAGE followed by
western blot with 10469-1-
AP(RAN Antibody) at
dilution of 1:1000**