

SUB1 Polyclonal Antibody

Catalog number: 10948-2-AP

Size: 36 µg/150 µl

Source: Rabbit

Isotype: IgG

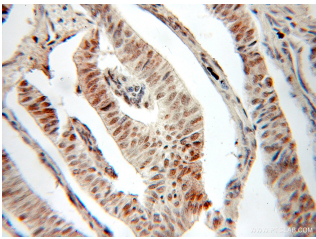
Synonyms:

SUB1; p14, PC4, Positive

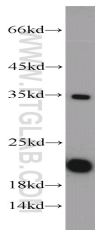
cofactor 4, RPO2TC1, SUB1,

SUB1 homolog, SUB1 homolog

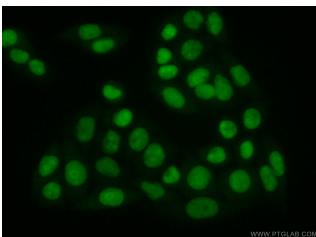
(*S. cerevisiae*)



Immunohistochemical of paraffin-embedded human pancreas cancer using 10948-2-AP (SUB1 antibody) at dilution of 1:50 (under 25x lens)



HeLa cells were subjected to SDS PAGE followed by western blot with 10948-2-AP (SUB1 antibody) at dilution of 1:1000



Immunofluorescent analysis of (10% Formaldehyde) fixed HeLa cells using 10948-2-AP (SUB1 Antibody) at dilution of 1:50 and Alexa Fluor 488-conjugated AffiniPure Goat Anti-Rabbit IgG(H+L)

Background

SUB1 gene encodes activated RNA polymerase II transcriptional coactivator p15, also termed as positive cofactor 4 (PC4) or p14. SUB1 is a sort of general coactivator that functions in assembling and stabilization of transcription complex. It has DNA binding activity and is localized in the nucleus, multiple modification sites of phosphorylation or acetylation may turn it appear slightly shifted molecular weight. Catalog#10948-2-AP is a rabbit polyclonal antibody raised against full-length human SUB1. This antibody recognizes 14-16 kDa (P14 or P15), 20 kDa (phospho form) and 30 kDa (Dimer form).

Applications

| | |
|--------------------------|--|
| Tested applications: | ELISA, WB, IHC, IF |
| Cited applications: | IHC, WB |
| Species specificity: | Human, Mouse, Rat; other species not tested. |
| Cited species: | Mouse |
| Calculated SUB1 MW: | 14 kDa |
| Observed SUB1 MW: | 20 kDa, 35 kDa |
| Positive WB detected in | HeLa cells, A549 cells |
| Positive IHC detected in | Human pancreas cancer tissue |
| Positive IF detected in | HeLa cells |
| Recommended dilution: | WB: 1:500-1:5000 |
| | IHC: 1:20-1:200 |
| | IF: 1:50-1:500 |

Application key: WB = Western blotting, IHC = Immunohistochemistry, IF = Immunofluorescence, IP = Immunoprecipitation

Immunogen information

| | |
|---------------------------|---------------------------------------|
| Immunogen: | Ag1390 |
| GenBank accession number: | BC009610 |
| Gene ID (NCBI): | 10923 |
| Full name: | SUB1 homolog (<i>S. cerevisiae</i>) |

Product information

| | |
|----------------------|---|
| Purification method: | Antigen affinity purification |
| Storage: | PBS with 0.1% sodium azide and 50% glycerol pH 7.3. Store at -20°C. |