

ATP5J Polyclonal Antibody

Catalog number: 14114-1-AP

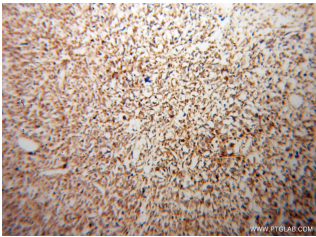
Size: 20 µg/150 µl

Source: Rabbit

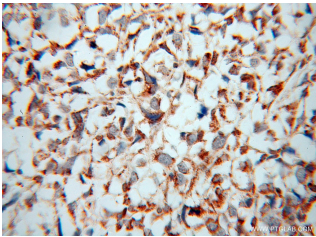
Isotype: IgG

Synonyms:

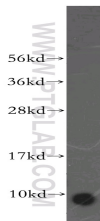
ATP5J; ATP5, ATP5A, ATP5J,
ATPase subunit F6, ATPM, CF6,
F6



Immunohistochemical of paraffin-embedded human osteosarcoma using 14114-1-AP (ATP5J antibody) at dilution of 1:100 (under 10x lens)



Immunohistochemical of paraffin-embedded human osteosarcoma using 14114-1-AP (ATP5J antibody) at dilution of 1:100 (under 40x lens)



human brain tissue were subjected to SDS PAGE followed by western blot with 14114-1-AP (ATP5J antibody) at dilution of 1:800

Background

ATP5J, also known as coupling factor 6 (CF6), is a soluble integral component of mitochondrial ATP synthase. Mitochondrial ATP synthase is a multi-subunit membrane-bound enzyme that catalyzes the synthesis of ATP by utilizing a proton electrochemical gradient. It consists of three domains, namely the extrinsic and intrinsic membrane domains (F1 and F0, respectively) joined by a stalk. CF6 is one of the subunits in the stalk and an essential component for energy transduction. Recently CF6 has also been reported to play a crucial role in the development of insulin resistance and hypertension. CF6 is first synthesized as an immature form in the cytosol, then transported to the mitochondria by an import signal peptide and becomes an active form with the signal peptide cleaved. Western blot analysis of CF6 demonstrates a single band around 9 kDa to 12 kDa in various tissues including heart, liver, brain and HUVEC (human umbilical vein endothelial cells).

Applications

Tested applications:	ELISA, WB, IHC
Species specificity:	Human, Mouse, Rat; other species not tested.
Calculated ATP5J MW:	13 kDa
Observed ATP5J MW:	9 kDa
Positive WB detected in	Human brain tissue, human heart tissue, mouse heart tissue, mouse liver tissue
Positive IHC detected in	Human osteosarcoma tissue
Recommended dilution:	WB: 1:200-1:2000 IHC: 1:20-1:200

Application key: WB = Western blotting, IHC = Immunohistochemistry, IF = Immunofluorescence, IP = Immunoprecipitation

Immunogen information

Immunogen:	Ag5263
GenBank accession number:	BC066310
Gene ID (NCBI):	522
Full name:	ATP synthase, H ⁺ transporting, mitochondrial F0 complex, subunit F6

Product information

Purification method:	Antigen affinity purification
Storage:	PBS with 0.02% sodium azide and 50% glycerol pH 7.3. Store at -20°C.