

## TMEM16A/DOG1 Polyclonal Antibody

Catalog number: 12652-1-AP

Size: 36 µg/150 µl

Source: Rabbit

Isotype: IgG

Synonyms:

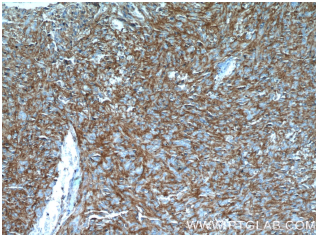
ANO1; ANO1, Anoctamin 1,

DOG1, FLJ10261, ORAOV2,

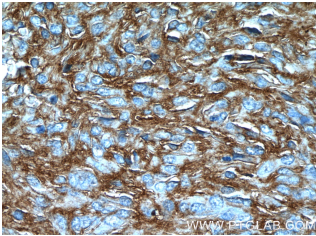
TAOS2, TMEM16A,

TMEM16A/DOG1,

Transmembrane protein 16A



Immunohistochemistry of paraffin-embedded stromal tumor tissue slide using 12652-1-AP (ANO1,DOG1 Antibody) at dilution of 1:50 (under 10x lens)



Immunohistochemistry of paraffin-embedded stromal tumor tissue slide using 12652-1-AP (ANO1,DOG1 Antibody) at dilution of 1:50 (under 40x lens)

### Background

ANO1 also named as DOG1, ORAOV2, TAOS2 and TMEM16A, acts as a calcium-activated chloride channel. It is required for normal tracheal development. ANO1 (or DOG1) is used as an aid in the identification and diagnosis of gastrointestinal stromal tumors (GIST) within the context of an antibody panel, the patient's clinical history, and other diagnostic tests evaluated by a qualified pathologist. The immunogen is the C-terminal of ANO1. This antibody can recognize isoform1 and isoform2 of human ANO1.

### Applications

Tested applications:	ELISA, IHC
Cited applications:	IF
Species specificity:	Human, Rat; other species not tested.
Cited species:	Rat
Calculated TMEM16A/DOG1	840aa,98 kDa
MW:	
Observed TMEM16A/DOG1	
MW:	
Positive IHC detected in	Stromal tumor tissue, human breast cancer tissue, human colon cancer tissue, human hepatocirrhosis tissue, human stomach cancer tissue
Recommended dilution:	IHC: 1:20-1:200

Application key: WB = Western blotting, IHC = Immunohistochemistry, IF = Immunofluorescence, IP = Immunoprecipitation

### Immunogen information

Immunogen:	Ag3320
GenBank accession number:	BC027590
Gene ID (NCBI):	55107
Full name:	Anoctamin 1, calcium activated chloride channel

### Product information

Purification method:	Antigen affinity purification
Storage:	PBS with 0.1% sodium azide and 50% glycerol pH 7.3. Store at -20°C.