

GPAA1 Polyclonal Antibody

Catalog number: 10104-1-AP

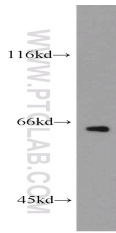
Size: 26 µg/150 µl

Source: Rabbit

Isotype: IgG

Synonyms:

GPAA1; GAA1, GAA1 protein homolog, GPAA1, hGAA1



HepG2 cells were subjected to SDS PAGE followed by western blot with 10104-1-AP(GPAA1 antibody) at dilution of 1:400

Background

GPAA1(Glycosylphosphatidylinositol anchor attachment 1 protein) is also named as GAA1. It is the most conspicuously hydrophobic of the known subunits of GPIT, and it may play a key role in substrate recognition. It is predicted to be a multispanning membrane protein of 67 kDa with seven transmembrane (TM) domains, a large luminal domain between the first two TM segments, and a cytoplasmically oriented N terminus bearing a potential ER retrieval signal in the form of a diarginine motif(PMID:12052837). It has 2 isoforms produced by alternative splicing and the full length protein has 2 glycosylation sites. This antibody is specific to GPAA1.

Applications

Tested applications:	ELISA, WB
Cited applications:	IHC
Species specificity:	Human,Mouse,Rat; other species not tested.
Cited species:	Human
Calculated GPAA1 MW:	68 kDa
Observed GPAA1 MW:	60-68 kDa
Positive WB detected in	HepG2 cells, mouse brain tissue
Recommended dilution:	WB: 1:200-1:1000

Application key: WB = Western blotting, IHC = Immunohistochemistry, IF = Immunofluorescence, IP = Immunoprecipitation

Immunogen information

Immunogen:	Ag0152
GenBank accession number:	BC004129
Gene ID (NCBI):	8733
Full name:	Glycosylphosphatidylinositol anchor attachment protein 1 homolog (yeast)

Product information

Purification method:	Antigen affinity purification
Storage:	PBS with 0.1% sodium azide and 50% glycerol pH 7.3. Store at -20°C.