

MPG Polyclonal Antibody

Catalog number: 11481-2-AP

Size: 20 µg/150 µl

Source: Rabbit

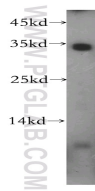
Isotype: IgG

Synonyms:

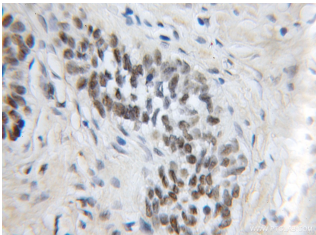
MPG; AAG; APNG; CRA36.1;

MDG; Mid1; PIG11; PIG16;

anpg



HepG2 cells were subjected to SDS PAGE followed by western blot with 11481-2-AP (MPG Antibody) at dilution of 1:800



Immunohistochemistry of paraffin-embedded human prostate cancer using 11481-2-AP (MPG Antibody) at Dilution 1:50 (under 10x lens)

Background

N-methylpurine DNA glycosylase (MPG), an initiator glycosylase of the base excision repair (BER) pathway, typically repairs alkyl-induced DNA adducts, many of which are associated with genomic instability and tumorigenic risk [PMID:22801474]. MPG initiates BER by removing TMZ-induced N3-methyladenine and N7-methylguanine base lesions, leaving abasic sites (AP sites) in DNA for further processing by BER [PMID:21377995]. MPG involves in modulating the genotoxic threshold response induced by the Sn2 alkylating agent ethyl methanesulfonate (EMS) [PMID:21071726].

Applications

Tested applications:	ELISA, WB, IHC
Species specificity:	Human, mouse, rat; other species not tested.
Positive WB detected in:	HepG2 cells
Calculated MPG MW:	293aa, 32kd
Observed MPG MW:	33kd
Positive IHC detected in:	Human prostate cancer
Recommended dilution:	WB: 1:200-1:2000 IHC: 1:20-1:200

Application key: WB = Western blotting, IHC = Immunohistochemistry, IF = Immunofluorescence, IP = Immunoprecipitation, FC = Flow cytometry

Immunogen information

Immunogen:	Ag2034
GenBank accession number:	BC014991
Gene ID (NCBI):	4350
Full name:	N-methylpurine-DNA glycosylase

Product information

Purification method:	Antigen affinity purification
Storage:	PBS with 0.1% sodium azide and 50% glycerol pH 7.3. Store at -20°C.