

## PPP1R2P9 Polyclonal Antibody

Catalog number: 11969-1-AP

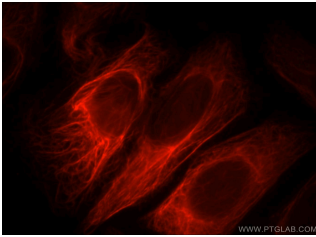
Size: 65 µg/150 µl

Source: Rabbit

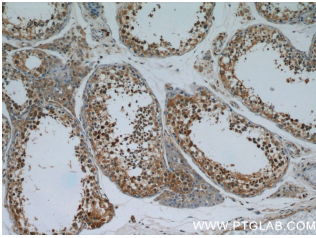
Isotype: IgG

Synonyms:

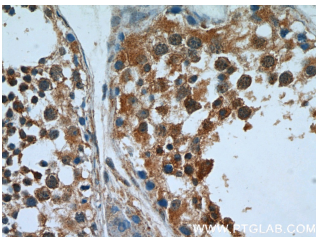
PPP1R2P9; I 4, PPP1R2P9



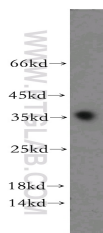
Immunofluorescent analysis of HepG2 cells, using PPP1R2P9 antibody 11969-1-AP at 1:25 dilution and Rhodamine-labeled goat anti-rabbit IgG (red).



Immunohistochemical of paraffin-embedded human testis using 11969-1-AP(PPP1R2P9 antibody) at dilution of 1:50 (under 10x lens)



Immunohistochemical of paraffin-embedded human testis using 11969-1-AP(PPP1R2P9 antibody) at dilution of 1:50 (under 40x lens)



human testis tissue were subjected to SDS PAGE followed by western blot with 11969-1-AP(PPP1R2P9

### Applications

Tested applications:	ELISA, WB, IHC, IF
Species specificity:	Human; other species not tested.
Calculated PPP1R2P9 MW:	202aa,23 kDa
Observed PPP1R2P9 MW:	35 kDa
Positive WB detected in	Human testis tissue, human brain tissue
Positive IHC detected in	Human testis tissue, human brain tissue
Positive IF detected in	HepG2 cells
Recommended dilution:	WB: 1:200-1:2000
	IHC: 1:20-1:200
	IF: 1:10-1:100

Application key: WB = Western blotting, IHC = Immunohistochemistry, IF = Immunofluorescence, IP = Immunoprecipitation

### Immunogen information

Immunogen:	Ag2591
GenBank accession number:	BC056673
Gene ID (NCBI):	80316
Full name:	Protein phosphatase 1, regulatory (inhibitor) subunit 2 pseudogene 9

### Product information

Purification method:	Antigen affinity purification
Storage:	PBS with 0.02% sodium azide and 50% glycerol pH 7.3. Store at -20°C.

antibody) at dilution of 1:300