



**IBT BIOSERVICES**

4 Research Court, Suite 300  
Rockville, MD 20850  
877-411-2041  
Services@ibtbioservices.com

## Rabbit anti-LASV Z pAb

**Catalog #:** 0307-002

**Lot #:** 1601005

**Immunogen:** Peptide sequence to Lassa virus (LASV) Z protein.

**Description:** Affinity purified rabbit polyclonal antibody reactive to LASV Z in Western blot and ELISA.

**Supplied:** 100 µg of antibody is supplied in PBS + 0.02% sodium azide at a concentration of **0.532 mg/mL**.

**Raised in:** Rabbits

**Purification:** Antibody is affinity purified using immobilized immunogen.

**Clonality:** Polyclonal

**Relevance:** The antibody can be used for detection of LASV Z.

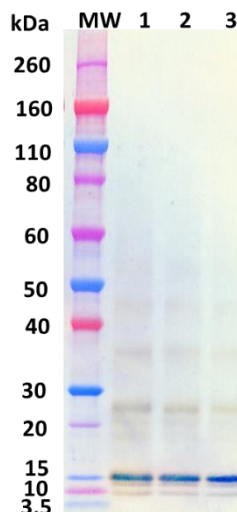
### Recommended Dilutions:

**ELISA:** Assay-dependent dilution.

**WB:** Assay-dependent dilution. Internal QC demonstrates good detection of LASV Z when using antibody at 0.1 µg/mL.

**Storage:** 2-3 weeks +4°C, -20°C long term

### Western Blot Data:



Western blot was detected under denaturing and reducing conditions with anti-LASV Z antibody at 0.1 µg/mL and visualized using an anti-rabbit IgG-HRP conjugate and TMB Membrane substrate. LASV Z is visualized at 25 ng, 50 ng, and 100 ng (lane 1, 2, and 3 respectively).

### ELISA Data:

Rb anti-Lassa Z (ug/mL)	OD 650 nm
10.0000	3.893
3.1623	3.894
1.0000	3.908
0.3162	3.417
0.1000	2.384
0.0316	1.414
0.0100	0.651
0.0032	0.283
0.0010	0.143
0.0003	0.087
0.0001	0.078
0.0000	0.071

LASV Z protein were diluted to 400 ng/well in PBS for plate coating. Anti-LASV Z antibody was serially diluted semi-log from 10 µg/mL and incubated on the coated plates. Washed plate was detected with anti-rabbit IgG-HRP conjugate and TMB substrate. OD650 is reported above.

**Intended for research use only, not for human, therapeutic, or diagnostic applications.**  
*The buyer cannot sell or otherwise transfer this product for Commercial Purposes without written approval of Integrated BioTherapeutics, Inc.*

**Copyright 2016. Integrated BioTherapeutics, Inc. All rights reserved.**