

RHOXF2 Polyclonal Antibody

Catalog number: 13088-1-AP

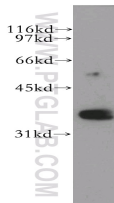
Size: 60 µg/150 µl

Source: Rabbit

Isotype: IgG

Synonyms:

RHOXF2; PEPP-2; PEPP2; THG1



K-562 cells were subjected to SDS PAGE followed by western blot with 13088-1-AP (RHOXF2 Antibody) at dilution of 1:1200

Applications

Tested applications:	ELISA, WB
Species specificity:	Human; other species not tested.
Positive WB detected in:	K-562 cells
Calculated RHOXF2 MW:	32kd
Observed RHOXF2 MW:	35-38kd
Recommended dilution:	WB: 1:500-1:5000

Application key: WB = Western blotting, IHC = Immunohistochemistry, IF = Immunofluorescence, IP = Immunoprecipitation, FC = Flow cytometry

Immunogen information

Immunogen:	Ag3602
GenBank accession number:	BC021719
Gene ID (NCBI):	84528
Full name:	Rhox homeobox family, member 2

Product information

Purification method:	Antigen affinity purification
Storage:	PBS with 0.1% sodium azide and 50% glycerol pH 7.3. Store at -20°C.