

## Apelin Polyclonal Antibody

Catalog number: 11497-1-AP

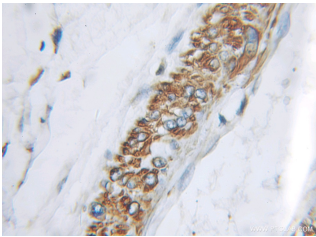
Size: 20 µg/150 µl

Source: Rabbit

Isotype: IgG

Synonyms:

APLN; APEL, apelin, APJ  
endogenous ligand, APLN,  
XNPEP2



Immunohistochemical of paraffin-embedded human pancreas cancer using 11497-1-AP (APLN antibody) at dilution of 1:100 (under 10x lens)

### Background

Apelin, isolated from bovine stomach tissue extracts, is recognized as the endogenous ligand of the angiotensin-like-receptor 1 (APJ), and the human orphan G-protein-coupled receptor. Apelin is widely expressed in various organs such as the heart, lung, kidney, liver, adipose tissue, gastrointestinal tract, brain, adrenal glands, endothelium, and human plasma. Apelin has been found to be a potent stimulator of cardiac contractility and may function in the regulation of the cardiovascular system. Apelin is also known to be involved in the maintenance of insulin sensitivity and play an important role in liver disease.

### Applications

Tested applications:	ELISA, IHC
Species specificity:	Human, Mouse, Rat; other species not tested.
Calculated Apelin MW:	77aa, 9kd
Observed Apelin MW:	
Positive IHC detected in	Human pancreas cancer tissue
Recommended dilution:	IHC: 1:20-1:200

Application key: WB = Western blotting, IHC = Immunohistochemistry, IF = Immunofluorescence, IP = Immunoprecipitation

### Immunogen information

Immunogen:	Ag2047
GenBank accession number:	BC021104
Gene ID (NCBI):	8862
Full name:	Apelin

### Product information

Purification method:	Antigen affinity purification
Storage:	PBS with 0.1% sodium azide and 50% glycerol pH 7.3. Store at -20°C.