

IFRD1 Polyclonal Antibody

Catalog number: 12939-1-AP

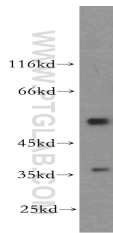
Size: 20 µg/150 µl

Source: Rabbit

Isotype: IgG

Synonyms:

IFRD1; IFRD1, PC4, TIS7



HeLa cells were subjected to SDS PAGE followed by western blot with 12939-1-AP(IFRD1 antibody) at dilution of 1:600

Applications

Tested applications:	ELISA, WB
Species specificity:	Human,Mouse,Rat; other species not tested.
Calculated IFRD1 MW:	451aa,50 kDa
Observed IFRD1 MW:	51 kDa
Positive WB detected in	HeLa cells, human skeletal muscle tissue
Recommended dilution:	WB: 1:500-1:5000

Application key: WB = Western blotting, IHC = Immunohistochemistry, IF = Immunofluorescence, IP = Immunoprecipitation

Immunogen information

Immunogen:	Ag3988
GenBank accession number:	BC001272
Gene ID (NCBI):	3475
Full name:	Interferon-related developmental regulator 1

Product information

Purification method:	Antigen affinity purification
Storage:	PBS with 0.02% sodium azide and 50% glycerol pH 7.3. Store at -20°C.