

DPEP1 Polyclonal Antibody

Catalog number: 12222-1-AP

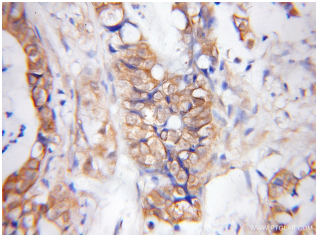
Size: 24 µg/150 µl

Source: Rabbit

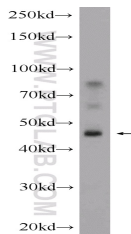
Isotype: IgG

Synonyms:

DPEP1; Dehydropeptidase I,
Dipeptidase 1, dipeptidase 1
(renal), DPEP1, hRDP, MBD1,
MDP, Microsomal dipeptidase,
RDP, Renal dipeptidase



Immunohistochemical of paraffin-embedded human pancreas cancer using 12222-1-AP (DPEP1 antibody) at dilution of 1:50 (under 10x lens)



mouse liver tissue were subjected to SDS PAGE followed by western blot with 12222-1-AP (DPEP1 Antibody) at dilution of 1:300

Background

DPEP1 (Dipeptidase 1) is also named as MDP, RDP and belongs to the peptidase M19 family. It is a glycoprotein that plays an important role in the regulation of leukotriene activity. DPEP1 converts leukotriene D4 to leukotriene E4.

Applications

Tested applications:	ELISA, IHC, WB
Species specificity:	Human, Mouse, Rat; other species not tested.
Calculated DPEP1 MW:	411aa, 46 kDa
Observed DPEP1 MW:	46 kDa
Positive WB detected in:	Mouse liver tissue
Positive IHC detected in:	Human pancreas cancer tissue, human kidney tissue
Recommended dilution:	WB: 1:200-1:1000 IHC: 1:20-1:200

Application key: WB = Western blotting, IHC = Immunohistochemistry, IF = Immunofluorescence, IP = Immunoprecipitation

Immunogen information

Immunogen:	Ag2907
GenBank accession number:	BC017023
Gene ID (NCBI):	1800
Full name:	Dipeptidase 1 (renal)

Product information

Purification method:	Antigen affinity purification
Storage:	PBS with 0.1% sodium azide and 50% glycerol pH 7.3. Store at -20°C.