

## EIF4E2 Polyclonal Antibody

Catalog number: 12227-1-AP

Size: 33 µg/150 µl

Source: Rabbit

Isotype: IgG

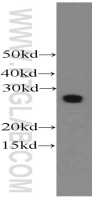
Synonyms:

EIF4E2; 4E LP, 4EHP, eIF 4E type 2, eIF4E like protein 4E LP, eIF4E type 2, EIF4E2, EIF4EL3, IF4e, mRNA cap binding protein 4EHP

### Applications

<b>Tested applications:</b>	ELISA, WB, IP
<b>Species specificity:</b>	Human, Mouse, Rat; other species not tested.
<b>Calculated EIF4E2 MW:</b>	245aa, 28 kDa
<b>Observed EIF4E2 MW:</b>	28 kDa
<b>Positive WB detected in</b>	HeLa cells, MCF7 cells, mouse kidney tissue
<b>Positive IP detected in</b>	MCF-7 cells
<b>Recommended dilution:</b>	WB: 1:200-1:2000 IP: 1:200-1:2000

Application key: WB = Western blotting, IHC = Immunohistochemistry, IF = Immunofluorescence, IP = Immunoprecipitation



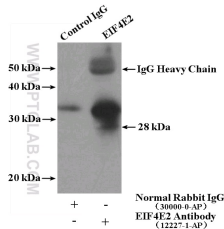
HeLa cells were subjected to SDS PAGE followed by western blot with 12227-1-AP (EIF4E2 antibody) at dilution of 1:500

### Immunogen information

<b>Immunogen:</b>	Ag2864
<b>GenBank accession number:</b>	BC021690
<b>Gene ID (NCBI):</b>	9470
<b>Full name:</b>	Eukaryotic translation initiation factor 4E family member 2

### Product information

<b>Purification method:</b>	Antigen affinity purification
<b>Storage:</b>	PBS with 0.02% sodium azide and 50% glycerol pH 7.3. Store at -20°C.



IP Result of anti-EIF4E2 (IP:12227-1-AP, 4µg; Detection:12227-1-AP 1:500) with MCF-7 cells lysate 1280µg.