

CYC1 Polyclonal Antibody

Catalog number: 10242-1-AP

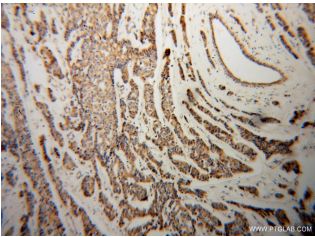
Size: 26 µg/150 µl

Source: Rabbit

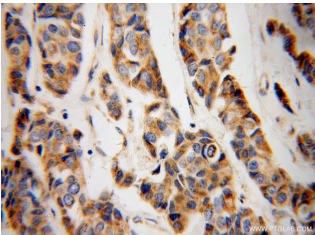
Isotype: IgG

Synonyms:

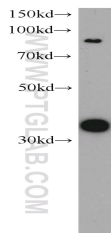
CYC1; Complex III subunit 4,
Complex III subunit IV, CYC1,
cytochrome c 1, UQCR4



Immunohistochemical of paraffin-embedded human breast cancer using 10242-1-AP (CYC1 antibody) at dilution of 1:100 (under 10x lens)



Immunohistochemical of paraffin-embedded human breast cancer using 10242-1-AP (CYC1 antibody) at dilution of 1:100 (under 40x lens)



human brain tissue were subjected to SDS PAGE followed by western blot with 10242-1-AP (CYC1 antibody) at dilution of 1:300

Background

CYC1, also named as Cytochrome c-1, belongs to the cytochrome c family. Cytochrome c1 is one respiratory subunit of the 11 subunits of the cytochrome bc1 complex of the mitochondrial electron-transfer chain. It mediates the transfer of an electron from Rieske iron-sulfur protein to cytochrome c (PMID:3036122). CYC1 mediates apoptosis. In this pathway, a variety of apoptotic stimuli cause CYC1 release from mitochondria, which in turn induces a series of biochemical reactions that result in caspase activation and subsequent cell death. (PMID:15189137) While CYC1 release and DNA fragmentation are unaffected by the noncleavable p75 mutant, mitochondrial morphology of dying cells is maintained, and loss of plasma membrane integrity is delayed (PMID:15186778). The protein migrated as a 35 kD band in SDS page.

Applications

Tested applications:	ELISA, WB, IHC
Cited applications:	WB
Species specificity:	Human; other species not tested.
Cited species:	Human, macaques, mouse
Calculated CYC1 MW:	35 kDa
Observed CYC1 MW:	35 kDa
Positive WB detected in:	Human brain tissue
Positive IHC detected in:	Human breast cancer tissue
Recommended dilution:	WB: 1:500-1:5000 IHC: 1:20-1:200

Application key: WB = Western blotting, IHC = Immunohistochemistry, IF = Immunofluorescence, IP = Immunoprecipitation

Immunogen information

Immunogen:	Ag0291
GenBank accession number:	BC001006
Gene ID (NCBI):	1537
Full name:	Cytochrome c-1

Product information

Purification method:	Antigen affinity purification
Storage:	PBS with 0.1% sodium azide and 50% glycerol pH 7.3. Store at -20°C.