

HLTF Polyclonal Antibody

Catalog number: 14286-1-AP

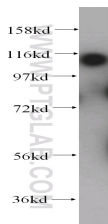
Size: 20 µg/150 µl

Source: Rabbit

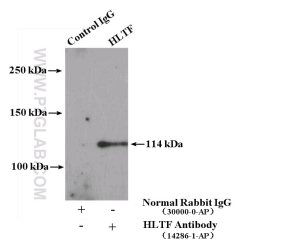
Isotype: IgG

Synonyms:

HLTF; HIP116, HIP116A, HLTF,
HLTF1, RING finger protein 80,
RNF80, SMARCA3, SNF2L3,
ZBU1



HeLa cells were subjected to SDS PAGE followed by western blot with 14286-1-AP (HLTF antibody) at dilution of 1:300



IP Result of anti-HLTF (IP:14286-1-AP, 4µg; Detection:14286-1-AP 1:500) with HeLa cells lysate 2400µg.

Applications

Tested applications:	ELISA, WB, IP
Species specificity:	Human, Mouse, Rat; other species not tested.
Calculated HLTF MW:	114 kDa
Observed HLTF MW:	114 kDa
Positive WB detected in:	HeLa cells, K-562 cells
Positive IP detected in:	HeLa cells
Recommended dilution:	WB: 1:200-1:2000
	IP: 1:200-1:2000

Application key: WB = Western blotting, IHC = Immunohistochemistry, IF = Immunofluorescence, IP = Immunoprecipitation

Immunogen information

Immunogen:	Ag5596
GenBank accession number:	BC044659
Gene ID (NCBI):	6596
Full name:	Helicase-like transcription factor

Product information

Purification method:	Antigen affinity purification
Storage:	PBS with 0.02% sodium azide and 50% glycerol pH 7.3. Store at -20°C.