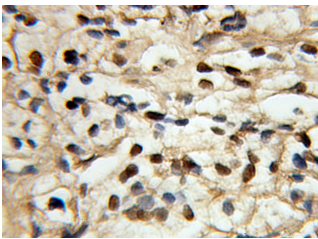
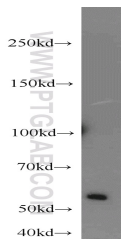


SMARCE1 Polyclonal Antibody

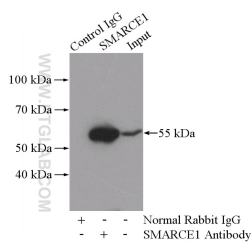
Catalog number: 10814-1-AP
Size: 30 µg/150 µl
Source: Rabbit
Isotype: IgG
Synonyms:
SMARCE1; BAF57, BRG1 associated factor 57, SMARCE1



Immunohistochemical of paraffin-embedded human prostate cancer using 10814-1-AP (SMARCE1 antibody) at dilution of 1:100 (under 40x lens)



Jurkat cells were subjected to SDS PAGE followed by western blot with 10814-1-AP (SMARCE1 antibody) at dilution of 1:1000



IP Result of anti-SMARCE1 (IP:10814-1-AP, 4µg; Detection:10814-1-AP 1:800) with HEK-293 cells lysate 880µg.

Background

Via antagonizing chromatin-mediated transcriptional repression, the SWI/SNF complex in *S. cerevisiae* and *Drosophila* is thought to facilitate transcriptional activation of specific genes. The BRG1/brm-associated factors, or SMARCE1, complex in mammals is functionally related to SWI/SNF and consists of 9 to 12 subunits, some of which are homologous to SWI/SNF subunits. It contains a DNA-binding HMG domain and performs multiple biological functions, including DNA-, protein- and chromatin-binding, transcription coactivating activity, chromatin modification, DNA-dependent negative regulation of transcription, regulation of transcription of the RNA polymerase II promoter. In addition, SMARCE1, as an ER (estrogen receptor) subtype-selective modulator, regulates ER mediated transcription in a ligand-dependent manner and also directly binds to AR (androgen receptor) to alter its activity

Applications

Tested applications:	ELISA, WB, IHC, IP
Species specificity:	Human, Mouse, Rat; other species not tested.
Calculated SMARCE1 MW:	47 kDa
Observed SMARCE1 MW:	50-55kd
Positive WB detected in	Jurkat cells, HEK-293 cells, HeLa cells, MCF7 cells
Positive IP detected in	HEK-293 cells
Positive IHC detected in	Human prostate cancer tissue
Recommended dilution:	WB: 1:500-1:5000 IP: 1:200-1:2000 IHC: 1:20-1:200

Application key: WB = Western blotting, IHC = Immunohistochemistry, IF = Immunofluorescence, IP = Immunoprecipitation

Immunogen information

Immunogen:	Ag1161
GenBank accession number:	BC007082
Gene ID (NCBI):	6605
Full name:	SWI/SNF related, matrix associated, actin dependent regulator of chromatin, subfamily e, member 1

Product information

Purification method:	Antigen affinity purification
Storage:	PBS with 0.1% sodium azide and 50% glycerol pH 7.3. Store at -20°C.