

C1D Polyclonal Antibody

Catalog number: 10711-1-AP

Size: 37 µg/150 µl

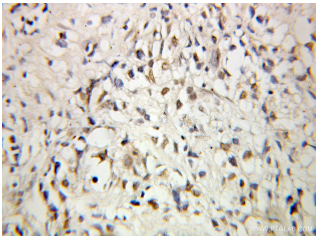
Source: Rabbit

Isotype: IgG

Synonyms:

C1D; C1D, hC1D, LRP1, SUN

CoR, SUNCOR



Immunohistochemical of paraffin-embedded human prostate cancer using 10711-1-AP (C1D antibody) at dilution of 1:100 (under 10x lens)

Applications

Tested applications:	ELISA, IHC
Species specificity:	Human, Mouse, Rat; other species not tested.
Calculated C1D MW:	16 kDa
Observed C1D MW:	
Positive IHC detected in	Human prostate cancer tissue
Recommended dilution:	IHC: 1:20-1:200

Application key: WB = Western blotting, IHC = Immunohistochemistry, IF = Immunofluorescence, IP = Immunoprecipitation

Immunogen information

Immunogen:	Ag1121
GenBank accession number:	BC005235
Gene ID (NCBI):	10438
Full name:	C1D nuclear receptor co-repressor

Product information

Purification method:	Antigen affinity purification
Storage:	PBS with 0.1% sodium azide and 50% glycerol pH 7.3. Store at -20°C.