

## ROPN1L Polyclonal Antibody

Catalog number: 12565-1-AP

Size: 33 µg/150 µl

Source: Rabbit

Isotype: IgG

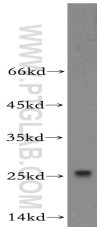
Synonyms:

ROPN1L; AKAP associated sperm protein, ASP, FLJ23003, FLJ25776, ROPN1 like protein, ROPN1L, ropporin 1 like, Ropporin 1 like protein

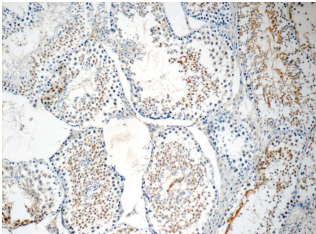
### Applications

Tested applications:	ELISA, WB, IHC
Species specificity:	Human, Mouse, Rat; other species not tested.
Calculated ROPN1L MW:	230aa, 26 kDa
Observed ROPN1L MW:	26kd
Positive WB detected in	Mouse testis tissue
Positive IHC detected in	Mouse testis tissue
Recommended dilution:	WB: 1:200-1:2000 IHC: 1:20-1:200

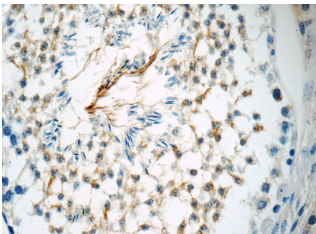
Application key: WB = Western blotting, IHC = Immunohistochemistry, IF = Immunofluorescence, IP = Immunoprecipitation



mouse testis tissue were subjected to SDS PAGE followed by western blot with 12565-1-AP (ROPN1L antibody) at dilution of 1:300



Immunohistochemistry of paraffin-embedded mouse testis tissue slide using 12565-1-AP (ROPN1L Antibody) at dilution of 1:50 (under 10x lens)



Immunohistochemistry of paraffin-embedded mouse testis tissue slide using 12565-1-AP (ROPN1L Antibody) at dilution of 1:50 (under 40x lens)

### Immunogen information

Immunogen:	Ag3178
GenBank accession number:	BC014607
Gene ID (NCBI):	83853
Full name:	Ropporin 1-like

### Product information

Purification method:	Antigen affinity purification
Storage:	PBS with 0.02% sodium azide and 50% glycerol pH 7.3. Store at -20°C.